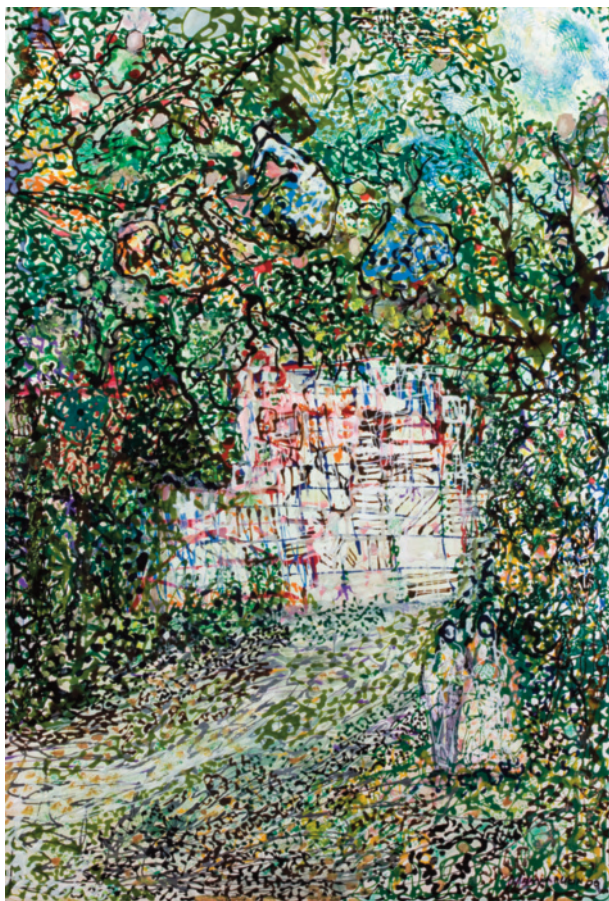


M



Anya Rubin *Paradise lost*, 2008. Enamel on board. 24 x 36 inches.
Courtesy: Andre Zarre Gallery, New York.

in the art world

theMmag.com

December 2009



ARTIST | DAVID STOLTZ | WALKIE TALKIE, 1982



Iris Schieferstein, *German Autumn*, Digital Print 2009

SAGAMORE

THE ART HOTEL



1671 COLLINS AVENUE SOUTH BEACH
SOCIAL MIAMI RESERVATIONS 786 594 3344
SAGAMOREHOTEL.COM 305 535 8088

BREAKTHROUGH

Reflections on the Berlin Wall

BERTOLD BARASCH
MICHEL HAESE
HEIDE HATRY
LAURA HATRY
PAUL KAESTNER
RICHARD RABENSAAT
HENRY RASMUSSEN
IRIS SCHIEFERSTEIN

3 November - 23 December 2009

HP GARCIA GALLERY

580 Eighth Avenue @ 38th Street NYC 212 354 7333 hpgarciagallery.com

Art | Basel | Miami Beach

3-6 | Dec | 09




Vernissage | December 2, 2009 | by invitation only
Catalog order | Tel. +1 212 627 1999, www.artbook.com

The International Art Show – La Exposición Internacional de Arte
Art Basel US Office: FITZ & CO., New York
Tel. +1 212 627 1654, Fax +1 212 627 0654
usoffice@artbasel.com, www.artbasel.com

M
.CH

 UBS

 B r e v a r d s

2320 North Miami Ave
Miami Fl 33127



305.576.5747
Brevards.com

art miami

20TH ANNIVERSARY

2nd to 6th | December 2009

VIP Preview December 1 – Benefiting Lotus House Women's Shelter

Lotus House where hope blossoms
the sundari foundation, inc.

Amador Gallery New York | Art Nouveau Galeria Venezuela | Barry Friedman New York
Barry Singer Gallery Petaluma | Bolsa de Arte Porto Allegre | Bullseye Gallery Portland
C. Grimaldis Gallery Baltimore | Caldwell Snyder Gallery San Francisco | Catherine Edelman Gallery Chicago
Cernuda Arte Coral Gables | Chinasquare Gallery NY New York | Cynthia Corbett Gallery London
Cynthia Reeves New York | David Findlay Fine Art New York | David Klein Gallery Birmingham
David Lusk Gallery Memphis | Dillon Gallery New York | Dot Fifty-One Miami
Douglas Dawson Gallery Chicago | Durban Segnini Gallery Miami | Eckert Fine Art Connecticut
Edelman Arts New York | Eli Klein Fine Art New York | Ferran Cano Palma de Mallorca
Friedman Benda New York | Frey Norris Gallery San Francisco | Galerie Forsblom Helsinki
Galerie Huebner & Huebner Frankfurt | Galerie Mark Hachem Paris | Galerie Olivier Waltman Paris
Galerie Piece Unique Paris | Galerie Terminus Munich | Galerie Von Braunbehrens Munich
Galeria d'Arte Contini Venice | Gary Snyder/Project Space New York | Goya Contemporary Baltimore
Hackelbury Fine Art Ltd London | Hasted Hunt Kraeutler New York | James Graham & Sons New York
Jenkins Johnson Gallery San Francisco | Jerald Melberg Gallery Charlotte
Juan Ruiz Galeria Venezuela | Katharina Rich Perlow Gallery New York | Kreisler Galeria de Arte Madrid
Laurence Miller Gallery New York | Lausberg Contemporary Toronto | Leon Tovar Gallery New York
Leonhard Ruethmueller Contemporary Art Basel | Lisa Sette Gallery Scottsdale
Mark Borghi Fine Art New York | McCormick Gallery Chicago | Nancy Hoffman Gallery New York
Nicholas Metivier Gallery Toronto | Nohra Haime Gallery New York | Olyvia Fine Art London
Pace Prints New York | Pan American Art Projects Miami | PDNB Gallery Dallas
Praxis International Art Miami | Renate Bender Munich | Robert Koch Gallery San Francisco
Rosenbaum Contemporary Boca Raton | Rudolf Budja Gallery Salzburg | Schuebbe Projects Dusseldorf
Scott White Contemporary San Diego | Seth Jason Beitler Fine Arts Miami | Stux Gallery New York
Susan Eley Fine Art New York | Susan Teller Gallery New York | Tai Gallery Santa Fe | Tresart Coral Gables
Turner Carroll Gallery Santa Fe | Vincent Vallarino Fine Art New York | Westwood Gallery New York
Wetterling Gallery Stockholm | William Shearburn Gallery St Louis | Zane Bennett Contemporary Santa Fe

INFO@ART-MIAMI.COM

WWW.ART-MIAMI.COM

Between NE 31st and NE 32nd St, Midtown Blvd (NE 1st Ave)

MIAMI
GREATER MIAMI
CONVENTION &
VISITORS BUREAU



NESPRESSO

DEBRA HOLT



"Explosion I" 60" x 80" 2009 C-Print Edition of 5

Recent Photographs & Video Installation
www.debraholt.com

PHOTO MIAMI December 1 to 6
www.photomiami-2009.com

ABBA FINE ART

233 NW 36 Street Miami FL 33127

305.576.4278

www.abbafineart.com

SCOPE Miami Art Show December 2-6 09

International Contemporary Art Show

MIAMI
DEC | 2-6 | 2009

**ART
ASIA**
INTERNATIONAL ASIAN
CONTEMPORARY ART

Film still from *The Ear* © Yi Zhou, 2009. Courtesy Contrasts Gallery

ARTASIAFAIR.COM

scope-art.com

New York Mar 3-7 10 Basel June 15-20 10 Hamptons July 23-26 10 London Oct 15-18 10

MIAMI INTERNATIONAL ART FAIR

7-10 JANUARY 2010
MODERN + CONTEMPORARY ART
MIAMI BEACH CONVENTION CENTER

Miami International Art Fair kicks off the international art fair season in Florida with galleries from every continent presenting the best in contemporary art, photography, video, and installation art.

Fair highlights include:

- Lecture series featuring prominent experts in Latin American and International Contemporary Art
- "Next Generation: 30 artists under 30"
- Over 100 major public sculptures by internationally renowned artists
- Special exhibition "Focus Argentina"

7-10 JANUARY 2010 (JAN 6 PREVIEW)
MIAMI BEACH CONVENTION CENTER
MIAMI BEACH, FLORIDA USA

www.mia-artfair.com



artpalmbeach

15-19 JAN 2010
ART + PHOTOGRAPHY + DESIGN

Celebrating its 13th anniversary, Art Palm Beach is a dynamic event in America's premier winter destination. International galleries present contemporary art, photography, video, installation art, public sculpture, and design.

The fair offers collectors, museum curators and trustees, art advisors, architects, and designers a week of city-wide art events, an educational lecture series, and VIP events.

The Preview Party benefits the Society for the Four Arts and the Young Collectors of the Norton Museum.

15-19 JANUARY 2010 (JAN 14 PREVIEW)
PALM BEACH COUNTY CONVENTION CENTER
WEST PALM BEACH, FLORIDA USA

www.artpalmbeach.com

VON LINTEL GALLERY | NEW YORK | VONLINTEL.COM

Izima Kaoru, Sakai Maki wears Jil Sander (2007), 2008. C-print, 70.9 x 99 inches



NEW LOCATION
520 WEST 23RD STREET
GROUND FLOOR
NEW YORK, NY 10011

520 WEST 23RD STREET | NEW YORK, NY 10011 | TEL 1 212 242 0599 | FAX 1 347 464 0011 | GALLERY@VONLINTEL.COM



A Stylish Gateway to the Lower East Side

151 East Houston Street, Lower East Side, NY tel 212-777-0012 www.hoteleasthouston.com

EDITORIAL

- 14 GwenoLee & Bernard Zürcher
Interview
By M. Brendon MacInnis
- 32 Anya Rubin
at Andre Zarre Gallery
By Peggy Healy

LISTINGS

- 35 New York City
- 53 Chicago
- 55 Los Angeles
- 57 San Francisco
- 59 Miami
- 63 Shanghai
- 63 Beijing

BASICS

- 12 News
- 60 Openings
- 63 Auctions
- 64 Index

MAPS

- 34 Village • LES
- 36 Soho • Tribeca
- 40 Chelsea
- 46 Midtown • 57th Street
- 48 Uptown
- 50 Brooklyn • Williamsburg
- 51 Queens • LIC
- 52 Chicago
- 54 Los Angeles
- 56 San Francisco
- 58 Miami • Wynwood
- 60 Shanghai
- 62 Beijing

The past is a foreign country; they do things differently there — Leslie Poles Hartley. Actually I never read the novel this prescient quote is attributed to, *The Go-Between* (1953). But with the recent death of Harold Pinter, who wrote the screenplay for the 1971 film adaptation, I've been sifting through fragments of language that resonate across time. Seems like a lot of people want to go back in time. Who would have thought we would be debating the merits of The New Deal nearly a hundred years after the The Great Depression. (Whose idea was it to call the Depression "Great" by the way?)

As inconvenient truths go, unfortunately when all of the economic stimulus plans and protectionist plans of the 1930s failed to turn around the most significant worldwide economic depression to date, the worldwide war economy — yeah, that one, World War Two, rather conveniently "happened" in 1939 and all of a sudden everyone was back at work. Sure do hope that today's economic stimulus plans and protectionist plans don't fail; you never know what can happen. Just a thought.

Then again, lots of people want to live in the future; they're saving other peoples' money for a rainy day or a nuclear winter, whichever comes first. What's your pleasure; hot or cold? In any case, money is not money unless you spend it. Like blood, it has to circulate or it's useless. The more you save, the more you lose. Where's that "irrational exuberance" when we really need it?

Yes, the world is changing; no, nothing's changed at all. *The past is a foreign country* — How does that go again?

in the art world®
the M magazine

Vol. 13, No. 4, Decemeber, 2009
ISSN 1534-5394

Executive Editor/ M. Brendon MacInnis • Promotions/ Tam Vo
• Art Director / Kristin Reger • Public Relations/ Homan Wu / •
Copyeditor Intern/ Claudia Eve Beauchesne / Circulations
Manager/ Steven Rodriguez / • Contributing Writers/ Mary
Hrbacek/ Joel Simpson/ Nicolette Ramirez/ Natane Takeda/
Joyce Korotkin/ Peggy Healy / • Photo Editor/ Joel Simpson •
Architecture Editor/ Guy Rezaciner • Webmaster/ Orin Buck

Asia Bureau • Editor/ Vivi Ying He
MBM Publications, Room 104, building 2, 91 Tai An Rd Shanghai
200052 China. Tel /CH 86.13761300987 /HK 852.95357978
email/ vivi@theMmag.com
theMmag.com

the M magazine® is published monthly by MBM Publications.
All requests for permission and reprints must be made in writing to
MBM Publications 303 West 42nd Street, fifth floor
New York, NY 10036. Tel 212.956.0614
editor@theMmag.com
Printed in Korea

BILBAO ARTE NEW YORK

December 15, 2009 - February 9, 2010

 **The Gabarron Foundation**
Carriage House Center for the Arts
149 East 38 Street New York
www.gabarronfoundation.org

News

New Member

Brevards Gallery has joined the Member Listings guide of M. (see Miami Listings).

ABBA Fine Art has joined the Member Listings guide of M. (see Miami Listings).

The High Line Gallery has joined the Member Listings guide of M. (see Chelsea Listings).

Messineo Art Projects has joined the Member Listings guide of M. (see Chelsea Listings).

Wyman Contemporary has joined the Member Listings guide of M. (see Chelsea Listings).

On the Move

Soho20 Chelsea has moved from 25th St. in Chelsea to 547 W 27th Street, still in Chelsea (see Chelsea Listings).

Feature Inc has relocated within the Lower East Side to 131 Allen St (see Village/LES Listings).

Art Fair

Art Miami 2009 celebrates its 20th year as Miami's longest running art fair. The 20th edition features a wide range of special exhibitions, including a series of video installations curated by Asher Remy Toledo and Julia Draganovic. For more information please visit: www.art-miami.com

Art Basel Miami Beach 2009, in its 8th edition, announces a totally new exhibition design and the launch of a new oceanfront exhibition environment created by an artist working with the New York arts organization, Creative Time. Presented in the public spaces between and around the oceanfront and the Miami Beach Convention Center, this year's Art Projects will connect the two main areas of the show. For more information please visit: www.artbasel.com/sections

Release Party

M celebrates its latest expanded edition with an art party in Miami's Wynwood Art District, hosted by ABBA Fine Art, at 233 NW 36 St., Saturday, December 5, during the Wynwood Art Walk. For more information, please call 212.956.0614 or rsvp@theMmag.com



BRUNCH LUNCH DINNER
OPEN EVERY DAY 11 AM - 11 PM

112 SUFFOLK ST, NEW YORK NY, 10002 PHONE: 212 533 6088

A Conversation with
Gwenolee & Bernard Zürcher

Zürcher Studio, New York
Galerie Zürcher, Paris

By M. Brendon MacInnis

Gwenolee & Bernard Zürcher, the co-owner directors of Galerie Zürcher in Paris since 1992, recently opened a second exhibition space, Zürcher Studio, in New York's East Village. They sat down with M to talk about their journey in the art world, from Paris to New York.

How long have you guys been in the business?

Gwenolee Zürcher — 16 or 17 years in Paris. We started there at the end of 1992.

How did the whole thing come together?

Bernard Zürcher — First, I was an art historian, but then I started working for different museums in Paris, Musée de l'Orangerie, Grand Palais, Palais de Tokyo, where I organized modern, not contemporary, art shows. The Palais de Tokyo was the former Museum of Modern art in Paris. The Museum was moved to the Centre Pompidou. I started to work there at the end of the 1970's. Because of the move, some rooms were empty and part of my job was to organize a few shows there. They wanted to create a special museum, the Musée d'Art et d'Essai, because we worked with students from the Ecole du Louvre; that's the main curatorial school in France. At the same time you had Musée Picasso and Musée d'Orsay prefigurations, all of these guys were working in different rooms, just next to mine, we were all together in Palais de Tokyo. So this was a place where new and different ideas were emerging.

So did you know each other when you were working there? I guess you would have been, like, in your twenties?

Gwenolee — Yes. When I started, just when I met you [to Bernard].

So Gwen, at that time, were you also involved in art in some way?



Gwenolee Zürcher

Gwenolee — No, I was a translator. My background is that I was an interpreter and translator. I used to work for a big European satellite communications organization called Eutelsat.

Your name, Zürcher, isn't that German?

Gwenolee — It's Swiss. That's Bernard's name [laughs]. Oh yeah, I'm one hundred percent French. Bernard is half Swiss and half French.

So you're from the French speaking part of Switzerland?

Gwenolee — Yes. But as a translator I happened to translate work for a publisher, and that was also how we met.

So you met, got together. At some point you opened the gallery; but before you opened the gallery, when was that point when you started to get involved as an art dealer?

Bernard — There is a short story that explains in a way, the first flash. I was an art historian



Bernard Zürcher

in a classical way, with some modern art, and so on. Then, at the beginning of the 1980's I was in charge of a show about Fauvism. I was just sitting here in the museum room, with all of these paintings; from Braque, to Matisse, to Vlaminck. They were all on the floor, against the wall, just like that. I thought, all these paintings, all this chef d'oeuvre; the list of their prices, having the insurance list in my hand with 30 million, 12 million, paintings like that that were very expensive and strong works. Suddenly I saw that all these paintings were made by young people, the youngest was Georges Braque, he was 24 and the oldest was Matisse, he was 35. They were all young! Suddenly the image became very strong. If I were living in the beginning of the 20th century, in 1905, I would be very interested in these guys of my same age, young guys! So why not work with my generation instead of just the past, these dead big artists? Why not be more engaged in a contemporary way and find the ones who are going to be the next big

important artists in the future, to look toward the future and not the past? It was something very strong in my mind. Maybe I wrote these big [art history] books; okay, I did my job on this subject. But now I want to go further.

Okay.

It's like now; we spent 15 years 17 years with the gallery in France [Galerie Zürcher], why not go further with a gallery in New York, where I can organize a new bridge between Paris and New York. I always have had the same process in my mind; I want to go further, a new adventure. But back then in the museums in France it was very difficult to find my way because there were very few structures operating with contemporary art. There were fewer museums. There was the Pompidou Center, but it was quite impossible to get to be part of this crew. I would have had to wait 10 years maybe; when you are 27 you don't want to wait so much!

Galleries that show emerging artists, usually have to deal works in the secondary market to make money. Or maybe they get lucky and discover an artist whose work takes off. How do you do it?

Bernard — We never work in the secondary market. We don't want to do that because it's not our perspective. We always work from the beginning, in the primary market. We're known for this in France. It's a delicate but strong line, because all of our force is behind the promotion of the artists we show. We meet the artists, get to know their work, but we are never driven by the market itself; we want to create a market. Our strategy is to create a market for artists that we trust and have hopes for. At the beginning, it was very difficult.

I see.

Bernard — Sometimes you have a power gallery who steals the artists; it's a risk, and so the main difficulty for us is to grow like the artists, to grow simultaneously, to protect our situation as a gallery and keep the artist in our group and be in a position to challenge offers. This is why we also wanted to go to New York, to give more visibility to our artists and also to choose new artists from here and from abroad. But to do our job as we have, to keep to our original ideas about focussing on the primary market; that's the important thing.

Gwenolee — This is very important. In fact collectors remark upon our unique way of working. It's based on this trust, confidence, conviction, that our artists have real original talent.

But what about artists who see a gallery that decides to invest in them, as emerging artists, as just a stepping stone to the next better offer.

Gwenolee — They go.

Isn't the best way to protect yourself against that sort of thing to own the artwork from the start? Do you do that? Or do you work on commission. I mean, if you think an artist is good, do you buy a lot of their work?

Bernard — No, we never do that.

Gwenolee — We buy as collectors.

Bernard — Our main capital is not so much that; it is the power of conviction, of confidence. To be able to explain to people what



Taylor McKimens *Burnin' Barrel*, 2008. Acrylic, acrylagouache and flashe on canvas 208 x 259 cm. © Courtesy Zürcher Studio, New York



Gwenelee & Bernard Zürcher during at opening at Zürcher Studio, New York. Photo: © Macinnis, 2009

this work of art, this artist we present, what he is doing, why his language is singular, original, why it is part of the future.

Gwenolee — Sticking to this idea.

Bernard — Right, because I am an art historian. To explain why this artist has a great chance to be known in art history; it's important. This conviction is based on criterion; we know very well past history and how things permit that these guys are part of the history, and why these other ones are not. When some guys are; what are the qualities, the required qualities? And when we know artists for a long time, you have some automatic criteria coming quick, you can judge, you see, you know how to judge. Even if you don't appreciate him so much, it's a question of how to measure their strength.

So then, you started with art history and soon you wanted to participate more actively in today's art world. Do you remember the first time you sold a piece of artwork? I remember the first time I sold work as a dealer; it's quite a thrill, isn't it?

Bernard — Yes, it was a painting by Paul Kallos, a Hungarian painter. It was interesting, it was one of the first paintings I sold. As it turned out, this guy was represented in the beginning by one of the most important dealers then, Pierre Loeb. He had a gallery in France before the war, like Pierre Matisse. He was working with Picasso, Braque, Miró. It was that guy who did the first Miró solo show in 1928.

So he's the person who bought the work originally?

Gwenolee — He was also showing Kallos when he was younger. He was working with Picasso and this generation.

Bernard — The story is that once, before the gallery, just before we opened the gallery in Paris [Galerie Zürcher], we went to an auction and it was in the middle of nowhere. An auction in the middle of France. The auctioneer was showing this tiny painting...

You bought the painting?

Bernard — Yes, it was a painting by him, but at first we don't know; we just saw that it was a very good painting and I said oh yes! Boom! I took the painting back home. It's a strong painting, I turned the back and I saw the stamp, Galerie Pierre Loeb on the label! This is history, History with a big "H" coming to me!

It gave me a start! His story, in a way, gave me the first stuff to start the gallery. Two months later, we met! This guy, when we opened the gallery two or three months later, he came to the gallery and said, "Hi I'm Paul Kallos, you bought a painting of mine"

Gwenolee — A painting from 1962.

Was it very expensive?

Gwenolee — No, it was very inexpensive. Maybe \$1000 or something like that.

Bernard — No, it wasn't much, but it was the link!

Gwenolee — It was a sign.

Bernard — Pierre Loeb was my very favorite modern dealer.

Gwenolee — More than Pierre Matisse, more interesting.

Bernard — Pierre Matisse is a great dealer but it was easier for Pierre Matisse to be a dealer because he was the son of Henri Matisse, so he came to New York. In a way, Pierre Loeb was like me. When he began, nobody knew him. He had to construct everything from a little room, just 4 meters by 4 meters; it was more of an office. He finished his career exhibiting the best artists in Europe.

And this was in Paris? When you bought this work, you say a few months later you opened your gallery, what year was that?

Gwenolee — We established the gallery at the end of 1992.

Bernard — It was before. It was 1988.

Gwenolee — But the story started three or four years before.

There were a few years of transition...

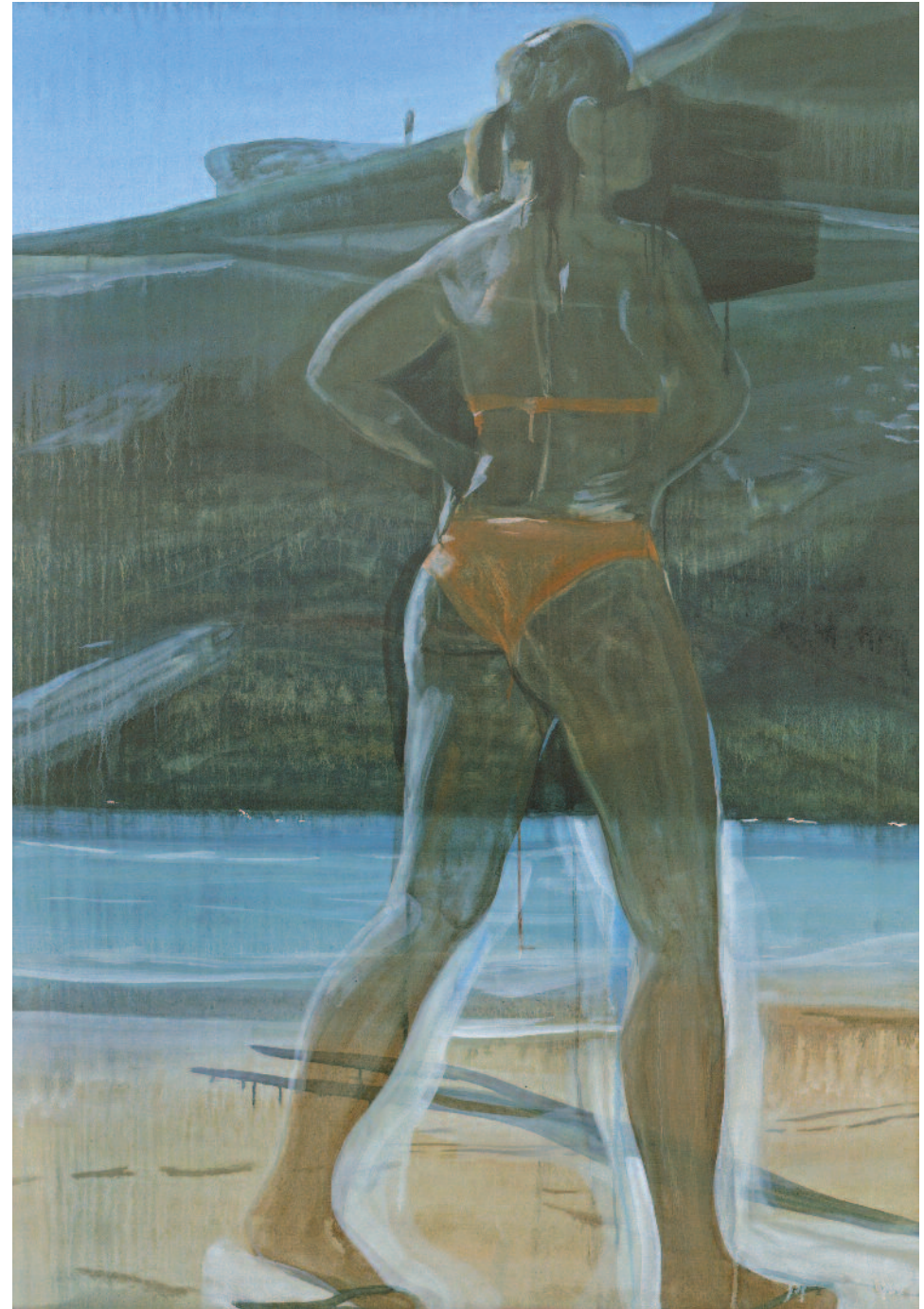
Gwenolee — Yes, then we wrote books.

Bernard — We began in a little space. Very small. In the 6th district [in Paris], it was at that time the end of the 1980's.

Gwenolee — We bought a wine cellar; then we sold the wine cellar to buy our existing space in Paris, and this happened in 1992.

To get back to the story of the painting; you bought this painting at auction and you saw it as a sign. So how did it go from there? I mean, when did you evolve from collector to dealer?

Bernard — I was a private dealer; at that time I when left the museum and worked for



Marc Desgrandchamps *Untitled*, 2008. Oil on canvas, 162 x 114 cm
©Jean-Louis Losi - Courtesy Zürcher Studio, New York

the publisher, as an author and editor, at the same time I began saving works of art. I wanted to go for contemporary art.

When did you first meet each other?

Gwenolee — We met in 1981.

Bernard — When I was working for the museum.

Gwenolee — It took 10 years!

So at that time you were pretty much content with doing translation work?

Gwenolee — Yes, I worked in this big company and also for an art publisher. I translated two books, including a book about New York! It's called "New York 1945-1960" written by Dore Ashton, a famous American writer. I translated the book into French. So you see, I already had something connecting me to New York...

So you started from an academic background and then, with the purchase of the Kallos painting, which you sold it as a private dealer, you decided to open your gallery?

Bernard — We were not prepared to be dealers; it's not easy, how to become dealer. There's no school for that! I had this painting on my wall, and suddenly people were saying, "Wow, I like this painting, what is this?" Then I would explain and talk about the artist and this guy says "Oh, okay I'll buy it." I was surprised! And when he gave me the check, this was the first act to deal, to be a dealer. I said to Gwenolee, "I just sold this painting," and she said, "Oh good!" And I realized then, as I say, the power of conviction. I was just talking about art. I deal like that. I'm not a guy who has to "sell" something. No, I speak about art and how it is part of this big art history. And if



John Hodany *Switching Swans, Praying Beaver*, 2009. Acrylic on paper inlay, 152 x 244 cm
© Courtesy Zürcher Studio, New York

people are then convinced, they say, "Okay, I'll buy it."

Gwenolee — I'll tell you, it's always the same story. It goes on like that. We experienced the same thing, I'm talking about a work, in a natural way and then after a certain time, you have some people who start to wonder, "Well how much is it?" They consider buying it. I'm always surprised, but it works.

Bernard — It's unusual in a way. Maybe the thing is...

Gwenolee — It's the best way to sell artwork.

Certainly the fact that you're an art historian helps! When you sold the Kallos work, did you sell it from your home? Did you already have a price in mind?

Bernard — Price; with price you find it with experience. Just to say right price...

Gwenolee — He said, "Let me consider, I have to think of it."

Ok, so then about three years later you decide to make the investment to have a public space, to open a gallery. When did you start doing art fairs?

Gwenolee — We started with FIAC in 1993, then a year later, it was quite quick. We did the first fairs in Europe, Artforum in Berlin... Art forum is a pleasant fair to do, but the art market in Germany is quite slow.

Did you do the one in Cologne? For a while it seemed like that was the big one to do in Germany.

Gwenolee — No, we never did Art Cologne. It used to be good if you showed German artists, you had a good chance. But we've never shown a lot of German artists; now we have Katharina Ziemke, but she's the first German artist we've had. We've shown Swiss artists; in the fall we're going to show Michel Huelin, an artist living in Geneva. He had a show at MOCA [Cleveland]. We showed two or three artists who are now quite well known, we showed them at the start, like Emmanuelle Antille, now represented by Eva Presenhuber.

Are you at a stage now where you want to get artists that other galleries have brought up in the ranks?

Bernard — Sometimes there are artists you want to be involved with even though you know they're represented by another gallery. You can share.

Gwenolee — Sometimes we share, but that's always at the beginning. We're not interested

in sharing an artist when he's already grown up. This is always from the start.

Where did the idea come from to open the new space [Zürcher Studio] in New York?

Gwenolee — We were interested in New York; we came here very often for 20 years, since 1987. One artist we represented back then, Bruno Rousselot, was living in New York and working close to the Brooklyn Bridge. We visited him regularly. Then Bernard was commissioned to write this big book on Braque, and a friend of ours who was a curator said, "Please come, stay with me, Bernard, there is so much documentation at the MoMA, you cannot write this book without the documentation at the MoMA". She made a very nice offer and this was our first New York experience. We stayed with her at her place and Bernard went every day to the MoMA. She introduced him.

Bernard — I knew every one at the Museum of Modern Art in France. But when I wanted access to the archives, this is typically French, they said, "No, you cannot touch these files, these files are reserved for this curator, and this person. You have to wait three months..."

Gwenolee — They make everything difficult.

Bernard — I cannot wait until this guy or that is allowed to see these files! They belong to the museum, not to him!

Gwenolee — Our friend Romy said, "Come to New York! I'll make everything easy for you!" And she did!

At that time, what was the gallery scene? That was in the late 1980s...

Gwenolee — Soho. Soho.

Yes, but there was also the phenomenon of the East Village art scene too at that time.

Gwenolee — Yeah! Exactly!

It's interesting that you guys are back in the neighborhood. Of course now we say LES [Lower East Side]. But it's really Soho and the East Village, sort of combined. I mean, it's just a few blocks in this or that direction and you're in Soho, the East Village, the Lower East Side...

Gwenolee — This is really the start of the contact with New York. The real thing about coming to New York is that I was involved with Pulse, the Pulse Art Fair, and the director, Helen Allen, offered for me to represent the French galleries, to be on the selection committee representing the French galleries, because most New York galleries don't know the situation with European galleries. We work with



Wang Keping *Woman on her back*, 2004. Beech wood, 48 x 70 x 47 cm
© Courtesy Zürcher Studio, New York

young artists, European galleries, we were well informed. Helen Allen said, "Please come and join me, I'm going to start Pulse, a new art fair." I said this is cool, I really want to be part of it.

How did you meet her again?

Gwenolee — She was visiting Paris, I don't know how she heard about us. She came to the gallery, I remember she phoned the gallery and said, "I would like to meet you guys one day." She came, she stayed a long time, at that time it was a recession, she said, "Think about it, I'd love to have you on this committee, I'm building, creating, founding this art fair," and I said yes right away because I liked her, I thought she was amazing. But we were too late, we didn't join the first edition, we did the second edition which was in New York, 2006. This was our first experience with the Pulse Art Fair. Then we went on and did Pulse New York in the spring, Pulse Miami in December, and so on. I'm still with Pulse and I'm very happy.

So to be on the selection committee, does that mean you participated as an exhibitor as well?

Gwenolee — Yes. There was a representative from Germany, from London, Berlin, Paris, and Madrid.

She did her homework, that's the difference from one fair to another.

Gwenolee — What was interesting is that we experienced an art fair in New York, and we saw first hand that the European artists we were showing had a lot of impact. A guy we'd heard of through a friend, Rodica Seward [the owner of Tajan a French auctioneer] Ahmet Ertegun was there, he was 80 years old when we met him. He's the founder of Atlantic Records and he was a great supporter.

He was visiting the fair and he just bumped into us, and he fell in love with the work of our artist, Marc Desgrandchamps, one of the best French painters, and in a minute, he bought the three biggest paintings we had in the booth; in just one minute, it's true! He said, "I want it." He said, "Please come to my house, I want to meet you, I want to know more about you." He also had a house in Paris, so we met frequently. We introduced him to Marc Desgrandchamps, because he wanted to meet him, so it was a big meeting. It turns out that Marc Desgrandchamps, he's always listening to Atlantic records; he's a collector, he's a fan, he knows a lot about jazz history.

Bernard — They talked together, I remember the meeting we arranged in Paris; in a restaurant for lunch. They talked for two hours! Sud-

denly Ahmet Ertegun turned to us and said, "This guy is a crazy guy, he knows everything!" He had questions; who is the drummer, who's the guy playing on this and on that? All the responses were correct, he said, "For a French guy, he knows everything. How can it be? And I love his work!"

Gwenolee — And so he bought more and more stuff! He told people about his work. It was the same story with our Chinese sculptor, Wang Keping, an important artist we discovered a long time ago. Before he died, he said, "You guys, you should bring your artists to New York, you have good artists, it's good art, you should really come to new york." It's not like coming once a year, to show at Pulse in the art fair. "You should really have a more permanent place, showroom to present your artist." This was very important to us because he was very strong, he was invited to the festival of Montreux for an homage to Ertegun and his wife, and we were sitting in the first row, next to him, we were his guests. He really loved us, it was very strong meeting him, something we cannot forget. He died two years ago in December. There was a big concert in New York with the Rolling Stones and he wanted to greet them at intermission, he went backstage and he talked to them and I don't know what happened, but he slipped. He fell down. He fainted, went into a coma for three months, and never recovered.

Gwenolee — Shaking hands with musicians, the people you've been supporting all your life and he was one of the first to support them a long time ago, you know, Led Zeppelin; all these rock legends. If he were still alive, he would be now 83 years old and he would be calling every day and bringing people and saying, "This is great!"

Did he live in New York?

Gwenolee — Yeah, sure! He was also a very nice as a person, very nice, really loving artists and loving art. Living for art.

So when you decided to get a space, how did you settle on the Lower East Side?

Gwenolee — We didn't like Chelsea, we visited about fifty places on the Upper East Side. Chelsea over saturated. We wanted ground floor space.

Once the migration from Soho to Chelsea began, things filled up there pretty quickly.

Gwenolee — Right, but I'm sure more galleries will come to this area and join us. In Chelsea, what we don't like is, you know the galleries in Chelsea, for me they are like shoe boxes, you open the door of one shoe box, and you



Visitors during at opening at Zürcher Studio, New York.
Photo: © Macinnis, 2009



Brian Belott, *Books, books, books*, 2009. Installation, Variable dimensions.
© Courtesy Zürcher Studio, New York

enter another! It means art, but it becomes another good to consume. It's consumption. This is not our idea of art. We think art is not only something to consume. It's much more having to do with the brain, with the intellect. It's not only a commercial product, it's not just a consumer good.

There is a social fabric here [in the LES], it's more the integration of boutiques and restaurants and clubs and galleries, people live here.

Bernard — Finally we found this place and saw good vibrations, because this place was before an artist's studio.

Gwenolee — Joel Shapiro, a sculptor, this was his studio. He was working here for 21 years. He came last month and visited us! Now he's 66 years old, he's famous. He said, "This place is too small for me!" He rented it from the same landlord.

What fairs do you do now?

Gwenolee — We're doing Pulse Miami, we're doing FIAC.

Bernard — FIAC is more interesting now, even if we prefer to focus on the art market in New York and build a market here. In France it's okay because we are known, it's not so important to continue with the fairs.

Gwenolee — Here, Pulse is important because this is a way to approach the American market, it's very important.

Pulse has got the Miami connection too. Didn't they do something in London at some point?

Gwenolee — At one time, yes, but it was not a success; it was so bad they didn't repeat it.

A lot of people are giving up on London, what about the West Coast?

Gwenolee — Right now we want to focus on New York and Miami.

Bernard — It's the very beginning of our story here; we opened three months ago, the new gallery. It's a new start, a new adventure.

Gwenolee — It's very challenging.

What if you find out you like it better here?

Gwenolee — At the moment, Bernard is finding New York more exciting than Paris.

The space you have in Paris, is it also a ground floor?

Bernard — Same size as this, very similar to this one; the location is very near the Pompidou Center.

Gwenolee — We're very well located, we're lucky in Paris, we have a very beautiful space.

Come to think of it, all the galleries in Paris are ground floor spaces.

Gwenolee — Yes, to stack galleries on floors, it's a New York thing. First of all in France, the rent is much cheaper than here, even for ground floor. It's half the price at least. Maybe 60% cheaper. So you see...

Bernard — It's an old place, from the 17th century. We are in the Marais, where there are very old buildings.

I remember that Vivi [Asia bureau editor for M] said you have interest in Chinese or Asian art. How will you develop that?

Gwenolee — We've always worked with this historical artist, Wang Keping. He is the founder of the Stars Group, which is the first Avant-Garde in China [in 1979]. I think many galleries want to go into this Chinese art market because it's hip, but a lot of it's commercial things. I'm not so convinced. I am more prudent...

Bernard — She speaks Chinese!

Gwenolee — I'm learning. I also worked as an Asian expert in France at the time. But it's more like a hobby; then the hobby became something else. I'm really interested in Chinese art history, so I'm open to see what happens. We've met a lot of Chinese artists, many painters in Beijing, but I have never been so convinced as to bring them to New York or Paris. Not for the moment, but we've been looking.

Bernard — For us, it's not a question of a market; it's only a question of art. Even in new emerging countries, you see new artists, you have a good chance to discover new artists. That's okay, but it's not why the market is opening. Now it's all global; it's interesting, more quickly you can have a collection. But for us it's only a question of art, of artists, of working with a human being! **M**



Gwenolee & Bernard Zürcher in front of their new gallery, Zürcher Studio, New York.
Photo: © Macinnis, 2009

Anya Rubin

Andre Zarre Gallery

By Peggy Healy

Anya Rubin's newest work, a series of enamel paintings entitled *Through a Glass Darkly*, was apparently inspired by poet, essayist and novelist Andrew Codrescu's *The Posthuman Dada Guide: Tzara and Lenin Play Chess*, in which Codrescu posits a chess match between Lenin and Tzara, founder of the anti-war Dada movement. In it, the author says, "... the miracle is that we are still here and young artists are remaking the joint." Rubin fancies herself one of the young artists "remaking the joint." Her work addresses a post-human society, connected to all kinds of electronic gadgets. Communication is transmitted through electronic pulses and, as a result, we are becoming like cartoons in a virtual reality.

At first glance Rubin's paintings are reminiscent of Jackson Pollock's action paintings, but the comparison is superficial. Hidden beneath Rubin's scrolls of dripped color are shadowy figures that haunt the canvas. In some paintings, the more the viewer looks, the more details of a single figure emerge, like a reflection in water as it stills. In others, the deeper we probe, the more numerous become the figures or faces. These figures ache to be heard and to connect, heart to heart, instead of data-byte to data-byte.

Rubin spent years working with oils before settling on enamel paint. One of the more interesting works in the show is *Inspired by Rebellious Silence*. She drew inspiration for this piece from another book, *After the Revolution: Women Who Transformed Contemporary Art*, by Eleanor Heartneyne. One of the "transformers" depicted is Shirin Neshat, a contemporary Iranian visual artist living in New York. Neshat's own *Rebellious Silence* depicts women enrobed in chadors, their hands, face and feet inscribed with stanzas of poetry by Iranian female poets.

The painting, *Left Behind* depicts the poignancy of what remains of a woman after death, whose presence lingers in familiar objects left behind. Here, Rubin is at her most tender and sad, mourning the loss of a loved one at the same time feeling the fragility of existence. **M**



Anya Rubin *Road Way Home*, 2009. Enamel, Acrylic on Canvas. 14 x 18 inches.
 Courtesy: Andre Zarre Gallery, New York



Village/ LES

BLT Gallery

Gerald Dearing, Steven Pyke: "Mater of Fact," photography, thru Dec 19
 270 Bowery, 2nd floor, 10002
 212.260.4129 info@billyleethompson.com
 www.billyleethompson.com Wed-Sun 11-6

Umbrella Arts - Bodell Fahey

"Holga Inspire", photography, Dec 9 thru Jan 16; Tammy Cromer-Campbell: "Holga Workshop", photography, Jan 23
 317 E 9, fifth floor, 10003
 212.505.7196 info@umbrellaarts.com
 www.umbrellaarts.com Thu-Sat 1-6; by appt

China Square

Ai Jing: "Ai Want to Love", curated by Sally Wu, Oct 27 thru Dec 27 at BoConcept Soho, 69 Greene Street, 10013
 102 Allen St, 10002
 212-255-8886 info@chinasquareny.com
 www.chinasquareny.com Tue-Sat 12-6; Thu 12-8

CSV

Multi-cultural arts center, ongoing events and shows
 107 Suffolk St, 10002
 212.260.4080 apagan@csvcenter.com
 www.csvcenter.com

Lehmann Maupin

Tracey Emin: "Tracey Emin", sculpture, painting, Nov 5 thru Dec 19
 201 Chrystie Street, 10002
 212 254 0054 info@lehmannmaupin.com
 www.lehmannmaupin.com Tue-Sat 10-6

The New Museum of Contemporary Art

Urs Fischer: "Urs Fischer: Marguerite de Ponty", sculpture, installation, Oct 28 thru Feb 7; Nikhil Chopra: "Nikhil Chopra", performance, Oct 28 thru Feb
 235 Bowery, 10002
 212-219-1222 info@newmuseum.org
 newmuseum.org Wed-Sun 12-6; Fri-Sat 7-9

NY Studio Gallery

Eunjung Hwang: "1,3 Characters", painting, video, sculpture, Nov 12 thru Dec 12; Al Wadzinski: "The Greatest Show on Earth", sculpture, Dec 17 thru Feb 6
 154 Stanton St, 10002
 212.627.3276 info@nystudiogallery.com
 www.nystudiogallery.com Thu-Sat 12-6; or by appt.

The Pen and Brush, Inc.

Dedicated to women in the visual, literary and performing arts since 1894
 16 E. 10th St., 10003
 212.475.3669 info@penandbrush.org
 www.penandbrush.org Thu-Fri 4-7; Sat & Sun 1-5

The Phatory llc

Antonio Ferrera, artist-in-residence thru Jan 30; please call gallery to view collection
 618 E 9th (btw Av's B & C), 10009
 212.777.7922 phatory@mac.com
 www.thephatory.com Appointment Only

Feature Inc

(Building new gallery space at this address, opening soon)
 131 Allen St, 10009
 212.675.7772 featureinc@featureinc.com

BODELL FAHEY UMBRELLA ARTS

WWW.UMBRELLAARTS.COM

Holga Inspire

December 9 - January 16, 2010
 International exhibit of ten Holga photographers



Photo: White House, © David Burnett

Holga Workshop

Saturday January 16, 2010
 with Tammy Cromer-Campbell
Register with us online

A Different Light:

Infrared Photography
 January 28 - February 27, 2010
 Theresa Airey, Sue Ruddick Bloom,
 Jill Enfield, Elizabeth Opalenik

Infrared Photo Workshop

Saturday January 30, 2010
 with Jill Enfield and Theresa Airey
Register with us online

Outsider Art Fair

February 5-7, 2010
 7 West 34th Street, NYC
 Margaret Bodell Booth #35

317 East 9th Street
 (between 1st and 2nd Ave)
 New York, NY 10003
 212-505-7196
 Hours: Thur-Sat 1-6pm

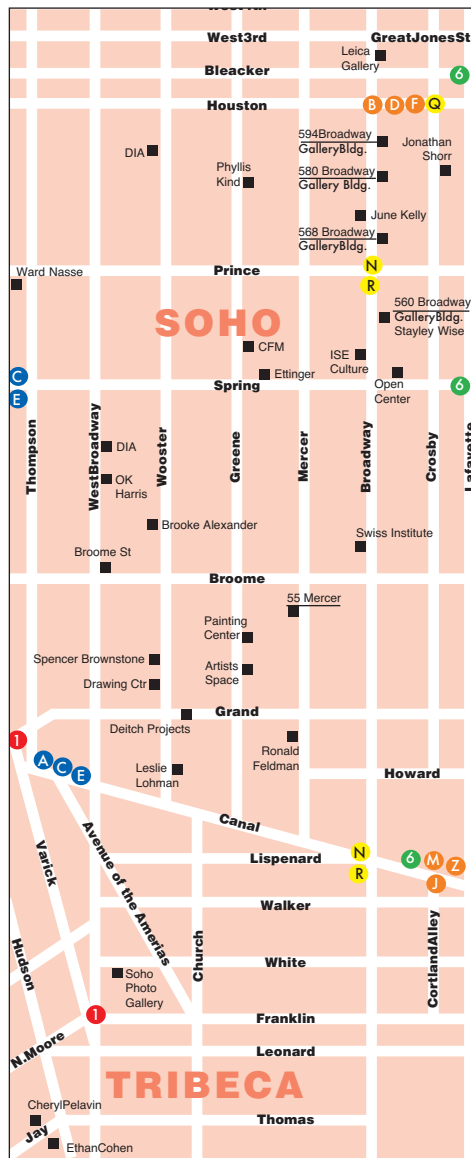
Village / LES

Woodward Gallery

Cristina Vergano: "Cristina Vergano: Just for You", painting, sculpture, Nov 7 thru Jan 9
133 Eldridge Street, 10002
212.966.3411 art@woodwardgallery.net
www.woodwardgallery.net Tue-Sat 11-6; Sun 12-5

Zürcher Studio

Katharina Ziemke: "The Thicket", painting, Nov 5 thru Dec 8;
Group Show: "Rue Francaise: curated by Miss China",
Concept Store, Dec 12 thru Jan 3
33 Bleecker St, 10012
212.777.0790 studio@galeriezurcher.com
www.galeriezurcher.com Tue-Sat 10-6; Sun 2-6



Soho

Brooke Alexander

Sol LeWitt: "Wall Drawing # 481: Two Part Drawing", Multiple asymmetrical pyramids with color ink washes superimposed, installation, thru Jan 16
59 Wooster, 2nd fl, 10012
212.925.4338 info@baeditions.com
www.baeditions.com Tue-Sat 10-6

Ethan Cohen Fine Arts

Project Gallery, Group Show: "Chinese Contemporary Art Stars", thru Jan
18 Jay St, 10013
212.625.1250 info@ecfa.com
www.ecfa.com Tue-Sat 11-6

Deitch Projects

Kristin Baker: "Splitting Twilight", Nov 05 thru Dec 19
76 Grand and 18 Wooster, 10013
212.343.7300 info@deitch.com
www.deitch.com Tue-Sat 12-6

The Drawing Center

"Ree Morton: At the Still Point of the Turning World", thru Dec 18
35 Wooster, 10013
212.219.2166 info@drawingcenter.org
www.drawingcenter.org Tue-Fri 10-6; Sat 11-6

Ronald Feldman Fine Arts

Vitaly Komar: "New Symbolism", painting, Nov 7 thru Dec 24
31 Mercer Street, 10013
212-226-3232 info@feldmangallery.com
www.feldmangallery.com Tue-Sat 10-6; Mon. by appt.

OK Harris Works of Art

Stephany Brody-Lederman, Stephen Fox, Francis Murphy, painting; Steven Corsano, works on paper; Raffael Lomas, sculpture, all Dec 5 thru Jan 9 (closed Dec 24 thru Jan 1)
383 West Broadway, 10012
212.431.3600
www.okharris.com Tue-Sat 10-6

Soho Photo Gallery

Wayne Parsons, Arnold Kastenbaum, Philip Sawyer, Fran Minien, Photography, Dec 1 thru Jan 2; Guest Photographer: Daniel Morel, Photography, Dec 1 thru Jan 2
15 White Street, 10013
212-226-8571 info@sohophoto.com
www.sohophoto.com Wed-Sun 1-6

Staley-Wise Gallery

Masters of fashion photography, Hollywood portraiture, landscapes, still lifes and nudes
560 Broadway, 3rd fl, 10012
212.966.6223 photo@staleywise.com
www.staleywise.com Tue-Sat 11-5

Ward-Nasse Gallery

5 different ethnic groups of the Amazon: "Braids and Colors of the Amazon", paintings, Nov 7 thru Dec 6; curated by Carmen Pousada: "Brazilian Artmosphere", painting, Dec 8 thru Dec 29
178 Prince, 10012
212.925.6951 markherd@wardnasse.org
www.wardnasse.org Mon-Fri 10-6

Chelsea

532 Gallery / Thomas Jaeckel

Hendrik Smit, "New Paintings", extended thru Dec 22
532 W 25, 10011
917.701.3338 info@532gallery.com
www.532gallery.com Tue-Fri 11-6; Sat 1-5

ACA Galleries

James McGarrell: "Window Jazz Inventions", painting, Dec 10 thru Jan 30; Abstract Ensemble, Dec 10 thru Jan 30
529 W 20, 10011
212.206.8080 info@acagalleries.com
www.acagalleries.com Tue-Sat 10-6; 10:30-6

Agora Gallery

Group Show: "Metamorphosis, The Color of Transformation, The Persistence of Form, The Rhythm of Color", Painting, sculpture, Nov 20 thru Dec 11; Ruth Gilmore Langs: "Ruth Gilmore Langs: Paint", painting, Nov 20 thru Mar 19
530 W 25, 10001
212.226.4151 info@agora-gallery.com
www.agora-gallery.com Tue-Sat 11-6

Barry Friedman Ltd.

Cristiano Bianchin, Yoichi Ohira, Laura de Santillana: "Venice. 3 Visions in Glass", Glass, Oct 29 thru Jan 16
515 W 26, 10001
212.239.8600 contact@barryfriedmanltd.com
www.barryfriedmanltd.com Tue-Sat 10-6

Blue Mountain Gallery

Gallery Artists: "The White Show", drawings, paintings, prints and sculpture, Dec 1 thru Dec 27
530 W 25, 4th fl, 10001
646.486.4730 info@bluemountaingallery.org
www.bluemountaingallery.org Tue-Sat 11-6

J. Cacciola Gallery

Eddie Kennedy, Ron Kingswood: "Eddie Kennedy, Ron Kingswood", painting, Dec 3 thru Jan 30
617 West 27th Street, 10001
212-462-4646 info@jacciologallery.com
www.jacciologallery.com Tue-Fri 11-5; or by appt.

Chambers Fine Art

"Harmonic Visions", Oct 21 thru Dec 31; "Me, Myself and I", Oct 17 thru Dec 5, 2009; "Tan Dun's Organic Music", installation, thru Jan 9
522 W. 19th, 10011
212.414.1169 info@chambersfineart.com
www.chambersfineart.com Tue-Sat 10-6

Cheim & Read

New Work: "Lynda Benglis", sculpture, Nov 19 thru Dec 19
547 W 25, 10001
212.242.7727 gallery@cheimread.com
www.cheimread.com Tue-Sat 10-6

Chelsea Art Museum, Home of the Miotte Foundation

"Jean Miotte: It's a Beautiful World", painting, Oct 3 thru Dec 30; So-Bin Park, mixedmedia, Nov 20 thru Jan 02; "Robert Chen: A Retrospective" Nov 20 thru Jan 02
556 W 22, 10011
212.255.0719 contact@chelseaartmuseum.org
www.chelseaartmuseum.org Tue-Sat 12-6; Thu 12-8

Chelsea



New York 10011

800 & 1500 SF • Ground Floor

511 W 20 St at the High Line

Chelsea



New York 10011

1800 SF • Ground Floor

138 W 19 St

Soho



New York 10013

400 & 860 SF • Ground Floor

517 & 519 Broome St

Ground Floors & Upper Floors for Rent
Commercial & Residential

Is-Ila Realty Corp.
212.645.2355 • 203.858.0059
getrealestateny@gmail.com

Chen Cheng-Hsiung

East Meets West

30-Year Retrospective: 1976-2006

At The Chelsea Art Museum

November 20 to December 31, 2009

The first New York exhibition of Chinese abstract expressionist Chen Cheng-Hsiung is on view at The Chelsea Art Museum from November 20 through December 31, 2009. More than 40 works spanning three decades will illustrate Chen's exploration of the dazzling world of color and lyricism that elevates his paintings from the realm of the physical to the realm of the spiritual. The fully illustrated catalogue that accompanies the exhibition includes essays by Michael Sullivan and John T. Spike.

Born in 1935, Chen (aka Robert Chen), is the youngest of three Chinese painters who contributed to the history of abstract expressionism. Working independently, the triumvirate of Zao Wou-ki, Chu Teh-Chun, and Chen became abstract painters during the 1950s, and were represented at the Salon de Mai in Paris. Chen is the only one of the three, however, who never migrated to the West. Based in Taipei, he painted, wrote, and traveled; his work was exhibited in Taiwan, China, Paris and, in recent years, Italy. Chen became internationally recognized and was the recipient of the Florence Biennale's Lorenzo il Magnifico Career Achievement in the Arts Award in 1999 and 2001. His work was honored in 2003 with a 50 year retrospective in the National Museum of History, Taipei, and the National Museum of China, Beijing.

The spontaneous process of Chen's expressions produces a unique signature, which is testament to his prolific efforts and lifelong investment in artistic exploration. In Chen's own words, "Every one of my paintings is done with the spontaneity that comes from unbroken meditation." As Dr. Spike writes in the catalogue, "Chen's color sense, poetic sensibility, and energetic brush technique are the three pillars of his work. Chen is composing pictures that weave the themes of his lifelong engagement with abstraction into a harmony of East and West, ideal and natural, abstract and traditional."

The Chelsea Art Museum

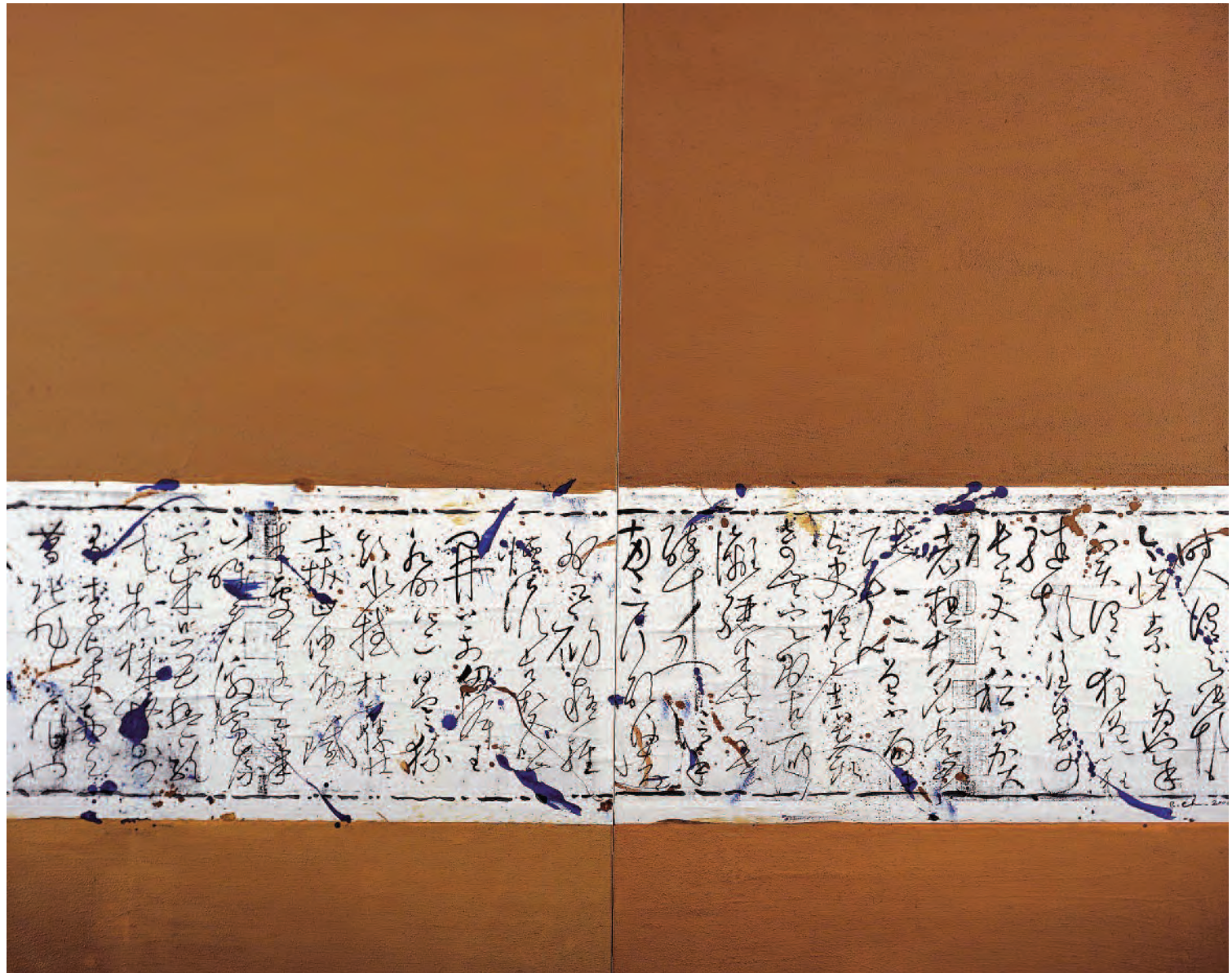
556 West 22nd Street | New York, NY 10011

212.255.0719 | www.chelseartmuseum.org



CHELSEA ART MUSEUM

HOME OF THE MIOTTE FOUNDATION



Chen Cheng-Hsiung *Digital Space, Series II, Diptych*. 2000. Mixed media on canvas, 162 x 130 cm.
Courtesy: Chelsea Art Museum, New York



Chelsea

Betty Cunningham Gallery

Pearlstein/Held, Nov 19 thru Feb 13
 541 W 25, 10001
 212.242.2772 info@bettycunninghamgallery.com
 www.bettycunninghamgallery.com Tue-Sat 10-6

Andrew Edlin Gallery

In Through the Out Door, Inaugural Show, Oct 22 thru Dec 5;
 Group Show: "Out of Order", curated by Scott Hug, all media,
 Dec 10 thru Jan 23
 134 10th Ave, 10011
 212.206.9723 ae@edlingallery.com
 www.edlingallery.com Tue-Sat 11-6

First Street Gallery

Mark Gotbaum: "Mark Gotbaum-Paintings and Drawings",
 Work in acrylic and pencil, Nov 3 thru Dec 5; Current and past
 members of First Street Gallery: "Four Decades: Fortieth
 Anniversary Exhibition", painting, encaustic, sculpture, work
 on paper, Dec 12 thru Jan 23
 526 W 26, 9th fl, 10001
 646.336.8053 gallery@firststreetgallery.net
 www.firststreetgallery.net Tue-Sat 11-6

Gagosian West 21st Street

Richard Serra, "Blind Spot / Open Ended", sculpture,
 Oct 27 thru Dec 23
 522 W 21, 10011
 212.741.1717
 newyork@gagosian.com
 www.gagosian.com Tue-Sat 10-6

Gagosian West 24th Street

Mike Kelley: "Horizontal Tracking Lines" Nov 7 thru Dec 23
 555 W 24, 10011
 212.741.1111
 newyork@gagosian.com
 www.gagosian.com Tue-Sat 10-6

George Billis Gallery

Enrique Santana, painting, Nov 3 thru Dec 19;
 Elizabeth O'Reilly, painting, Nov 3 thru Dec 19
 511 W 25, ground fl, 10001
 212.645.2621 gallery@georgebillis.com
 www.georgebillis.com Tue-Sat 11-6

Gladstone Gallery

Caroll Dunham, drawing / installation, thru Dec 5; Sharon
 Lockhart, photography, Dec 11 thru Jan 30
 515 W 24, 10011 info@gladstonegallery.com
 www.gladstonegallery.com 212.206.9300

High Line Gallery

Albert, Appleby, Battin, Horwitz, Koenig, Laird & Levin.
 Edward Wright (music performance on opening night)
 511 W 20, at the High Line 10011
 212.645.2355 • 203.858.0059
 getrealestateny@gmail.com Mon-Sun 10:30-6 & by appt

Jenkins Johnson

"Rene Lynch: Behind the Garden Gate", thru Dec 5; Group
 Show: "Winter Haiku", Dec 10 thru Jan 30 (double show;
 see San Francisco Listing)
 521 W 26, 10001
 212.629.0707 ny@jenkinsjohnsongallery.com
 www.jenkinsjohnsongallery.com Tue-Sat 10-6



Kent Gallery

Representing Dennis Adams, John Brill, Mike Cockrill, Heide
 Fasnacht, Lynn Foulkes, Charles Gaines, Paul Laffoley,
 Montadas, Irving Petlin, Emily Prince, Dorothea Tanning,
 Kumi Yamashita
 541 W 25, 2nd fl, 10001
 212.627.3680 kent@kentgallery.com
 www.kentgallery.com Tue-Sat 10-6

Jim Kempner Fine Art

Robert Motherwell, works on paper, thru Dec 12;
 Group Show, from the collection, including master prints from
 Rauschenberg, Warhol, Kelley, thru Dec 30
 501 W 23, 10011
 212.206.6872 info@jimkempnerfineart.com
 www.jimkempnerfineart.com Tue-Sat 10-6

Anton Kern Gallery

Michael Joo, mixed media, thru Dec 5; Brian Calvin, drawings,
 Dec 10 thru Jan 16
 532 W 20, 10011
 212.367.9663 anton@antonkerngallery.com
 www.antonkerngallery.com Tue-Sat 10-6

Kips Gallery

Andy Leleisi'ua: "Asefeka of the Unmalosa", Nov 10 thru Dec
 8; Alessio Delfino: "Metamorphosis", photography,
 Jan 5 thru Jan 30
 511 W 25, 10001
 212.242.4215 kips@kipsgallery.com
 www.kipsgallery.com Tue-Sat 11-6

RUTH GILMORE LANGS: PAINT

A solo exhibition presented by Agora Gallery



November 20, 2009 - March 19, 2010
Reception: Thursday, December 3, 6 - 8pm

530 West 25th St, Chelsea, New York, NY
212-226-4151 Fax: 212-986-4380
www.Agora-Gallery.com
info@Agora-Gallery.com

Agora
Gallery

Chelsea

Lehmann Maupin Gallery

Teresita Fernández, sculpture / installation, Oct 22 thru Dec 19
540 W 26, 10001
212.255.2923 info@lehmannmaupin.com
www.lehmannmaupin.com Tue-Sat 10-6

Robert Mann Gallery

Robert Frank, Sep 24 thru Jan 9
210 Eleventh Avenue, 10001
212.989.7600 info@robertmann.com
www.robertmann.com By Appointment Only

Matthew Marks Gallery

Peter Fischli & David Weiss (Fischli & Weiss), mixed media,
Oct 31 thru Jan 16
522 W 22, 10011
212.243.0200 info@matthewmarks.com
www.matthewmarks.com Tue-Sat 11-6

Kathryn Markel Fine Arts

Stephen Pentak: "Vertical Landscapes", Nov 19 thru Dec 23
529 W 20, 6th fl, 10011
212.366.5368 markel@markelfinearts.com
www.markelfinearts.com Tue-Fri 10-6; Sat 11-6

McKenzie Fine Art

Laura Watt, painting, Nov 19 thru Dec 19
511 W 25, #208, 10001
212.989.5467 info@mckenziefineart.com
www.mckenziefineart.com Tue-Fri 10-6; Sat 11-6

Messineo Art Projects

Celeste Fichter, Jim Knight, Andrea Sanders: "PERSPECTIVES",
contemporary color photography, featuring photo-based
media, chromogenic and digital prints, Dec 2 thru Jan 23
227 W 29, 4th fl., 10001
212-414-0827 memessineo@aol.com
www.messineowyman.com Wed-Sat 12-5; by appt

Metro Pictures Gallery

Olaf Breuning, Oct 29 thru Dec 5; Robert Longo,
photography, Dec 10 thru Jan
519 W 24, 10011
212.206.7100 gallery@metropicturesgallery.com
www.metropicturesgallery.com Tue-Sat 10-6

Robert Miller Gallery

Group Show, "Avec le Temps- In Time", Belgian Contempo-
rary artists, Nov 5 thru Dec 23
524 W 26, 10001
212.366.4774 rmg@robertmillergallery.com
www.robertmillergallery.com Tue-Sat 10-6

Mixed Greens

Kimberley Hart: "Scout", drawings, sculpture,
Nov 12 thru Dec 23
531 W 26, 1st fl, 10001
212-331-8888 info@mixedgreens.com
www.mixedgreens.com Mon-Fri 10-6; Saturday
11:00AM-6:00PM

The Museum at FIT

American Beauty, Nov 6 thru Apr 10
Seventh Ave at 27th, 10001
212.217.5800 info@themuseumatFIT.com
www.fitnyc.edu/museum Tue-Fri 12-8; Sat 10-5

Reeves Contemporary

H2O Film on Water, all media, Nov 16 thru Dec 23
535 W 24, 2nd fl, 10011
212.714.0044 info@reevescontemporary.com
www.reevescontemporary.com Tue-Sat 10-6

Ricco / Maresca

Alex Webb & Rebecca Norris Webb: "Violet Isle", photography
of Cuba, Nov 5 thru Jan 2
529 W 20, 3rd fl, 10011
212.627.4819 info@riccomaresca.com
www.riccomaresca.com Tue-Sat 11-6

Andrea Rosen

Group show, "The Perpetual Dialogue," painting,
sculpture, video, Dec 12 thru Jan 23
525 W 24, 10011
212.627.6000 l.mackall@rosengallery.com
www.andrearosengallery.com Tue-Sat 10-6

Jack Shainman Gallery

Antonio Murado, paintings, Nov 19 thru Jan 16
513 W. 20, 10011
212.645.1701 info@jackshainman.com
www.jackshainman.com Tue-Sat 10-6

Allen Sheppard Gallery

Molly Cliff Hilts: "Intersection", Dec 18 thru Jan 24
530 W 25, 10001
212.989.9919 info@allensheppardgallery.com
www.allensheppardgallery.com Tue-Sat 12-6



Alessio Delfino

metamorphoseis

Jan 5 - Jan 30, 2010

Kips Gallery

511 West 25th Street, Chelsea, New York, NY 10001 - www.kipsgallery.com

Chelsea

Soho20 Chelsea

Annual members group show, Nov 24 thru Dec 19
547 W. 27, ste. 301, 10001
212.367.8994 info@soho20gallery.com
www.soho20gallery.com Tue-Sat 12-6

Robert Steele Gallery

Timothy Paul Myers: "Parts Repeated", Nov 19 thru Dec 19
511 W. 25 St. suite 101, 10011
212.243.0165 info@robertsteelegallery.com
www.robertsteelegallery.com Tue-Sat 11-6

Stendhal Gallery

George Maciunas: "7 Paintings from the 1950s and Graphic Works, No Smoking", Painting and graphics, thru Dec 19
545 W. 20th St., 10011
212.366.1549 info@mayastendhalgallery.com
www.mayastendhalgallery.com Tue-Sat 11-6

Stricoff Fine Art Ltd.

Group show from the collection including sculpture by Emma Rodgers, painting, sculpture, thru Dec 30
564 W. 25, 10001
212.219.3977 info@stricoff.com
www.stricoff.com Tue-Sat 11-6

Studio 601

Works by Paul Kolker
511 West 25th Street, 10001
212.367.7300 elaine@paulkolker.com
www.paulkolker.com Mon-Sat 10-6

Stefan Stux Gallery

Anna Jóelsdóttir: "Priest Chews Velvet Haddock", painting, installation, Nov 19 thru Jan 9
530 W 25, 10001
212.352.1600 stux@stuxgallery.com
www.stuxgallery.com Tue-Sat 10-6

Von Lintel Gallery

Mark Sheinkman, paintings, Oct 15 thru Nov 14; Antonio Murado, paintings, Nov 19 thru Jan 16
520 W 23, Ground fl, 10011
212.242.0599 gallery@vonlintel.com
www.vonlintel.com Tue-Sat 10-6

Mike Weiss Gallery

Maya Gold: "Wake", painting, Oct 29 thru Jan 9
520 W 24, 10011
212.691.6899 info@mikeweissgallery.com
www.mikeweissgallery.com Tue-Sat 10-6

Wyman Contemporary

Celeste Fichter, Jim Knight, Andrea Sanders: "PERSPECTIVES", contemporary color photography, featuring photo-based media, chromogenic and digital prints, Dec 2 thru Jan 23
227 W 29, 4th fl., 10001
212-414-0827 memessineo@aol.com
www.messineowyman.com Wed-Sat 12-5; by appointment

Andre Zarre Gallery

Gallery one, "Anya Rubin: Recent Paintings" Nov 10 thru Dec 22;
Gallery two, "Elena Borstein: Recent Paintings" Nov 10 thru Dec 22
529 West 20th Street, 10011
212.255.0202
andrezarregallery.com Tue-Sat 10

Midtown

Asia Society

"Hanging Fire: Contemporary Art from Pakistan", thru Jan 3
725 Park Ave at 70th, 10021
212.288.6400 info@asiasociety.org
www.asiasociety.org Tue-Sun 11-6; Fri 11-9

DC Moore Gallery

"Jane Wilson: Recent Paintings", Nov 12 thru Dec 23
724 Fifth Ave at 57th, 8th fl, 10019
212.247.2111 info@dcmooregallery.com
www.dcmooregallery.com Tue-Sat 10-5:30

Forum Gallery

Holly Lane & Cybèle Young, Nov 12 thru Dec 23; Peter Krausz: "No Man's Land", Dec 3 thru Jan 16
745 Fifth Ave, at 57th, 4th & 5th fl, 10151
212.355.4545 gallery@forumgallery.com
www.forumgallery.com Mon-Fri 10-5:30

Fountain Gallery

"I Believe", Nov 20 thru Dec 30
702 Ninth Ave, 10019
212.262.2756 info@fountaingallery.com
www.fountaingallerynyc.com Tue-Sat 11-7; Sun 1-5

Galerie St. Etienne

Celebrating the 70th Anniversary of Galerie St. Etienne: "Egon Schiele As Printmaker", paintings, drawings, prints, Nov 3 thru Jan 9
24 W 57, 8th fl, 10019
212.245.6734 gallery@gseart.com
www.gseart.com Tue-Fri 11-5

Gallery Korea

"Faces and Facts: Korean Contemporary Art in New York", Nov 19 thru Jan
460 Park Ave, 6th fl, 10022
212.759.9550 info@koreanculture.org
www.koreanculture.org Mon-Fri 10-7; Sat 10-4

The Gabarron Foundation, Carriage House Center for the Arts

Group show: "BILBAO ARTE NEW YORKen", painting, photo, installation, Dec 15 thru Feb 9; Solo show: Miguel Galanda: "Night Metal", painting and sculpture, Oct 30 thru Dec 4
149 E 38, 10016
212.573.6968 x10 info@gabarron.org
www.gabarronfoundation.org By appointment only

HP Garcia Gallery

BREAKTHROUGH: Reflections on the Berlin Wall, a powerful and visually stimulating exhibition commemorating the 20th anniversary of the fall of the Berlin wall in 1989. BREAKTHROUGH communicates the personal reflections of the participating artists on the realities of life around the Berlin Wall, its consequences in the lives and psyche of the German people as well as the events that finally brought it down. Participating artists include: Bertold Barasch, Michel Haese, Heide Hatry, Laura Hatry, Paul Kaestner, Richard Rabensaat, Henry Rasmussen and Iris Schieferstein, Nov 3 thru Dec 23
580 Eighth Avenue, 7th Floor, 10018
212.354.7333 info@hpgarciagallery.com
www.hpgarciagallery.com Tue-Sat 1-6

MARK NEWTON *Fluid Plurality*

December 1 - 26, 2009



580 8th Avenue @ 38th Street NYC 10018 212.354.2999 info@newartcenter.net

anet abnous christine alfery demetrio alfonso vera arutyuniyan joanna bac elvira bach richard bailey john weeronga bartoo regina baumhauer xavier barthe klara beer may bender martin bernstein kirstin bruner joe bruno fran bull beatrice burel daniele casaburi pablo caviedes robin collins veronika constantine chiana coronis simone coulars eric cros jack dickerson dan cambell monica deac alessandra declario claire doucet opal dunbar rudy ernst gillian frazier karen freedman joyce fourmier dail fried maria c garcia gazala sharon gordon ann haessel habdaphai patter hellstrom meri leon hernandez diana hobson michiko hoshino pat houkes jenik nadiya jinnah remi jouandet alexandra kawiak nihal kececi kelly kehs david j labella kinga kolouszek frank korb patricia larsen jessika lenard jim lively hedy maimann saritha margon aethea maguire-cruz marija mccarthy dato mio sofya mirvis chris morris robert morton eileen murray prachie narain mark newton john nieman petra nimtz osama okhlatan conor o'donnell sonja olson marian osher allen palmer laurel panaranda nancy pantirer erin palazzolo joe palermo dominique pao hu sheng ping paula pohli gay phinney martin porry barbara rachko tanya ragir anil rao andrei robakov mark rodriguez pascal roso odile rousselet paul roux alexandra rozenman makato sasaki vivien schmidt hala schoukair joan schreder t.c.siang christel sobke julio susana han jong shin gabriel schuldiner rhona schonwald lyn smith bill storniak kunio suzuki kaori takamura missak terzian jack-ie thiaudiere timonde remi troteureau jette van der lende barbara yeterian lawrence von knorr rafal wieczorek lisa weinblatt sally west dennis wood

GROW EXHIBIT CONNECT

CONTEMPORARY ART NETWORK



580 8th AVENUE NYC 10018 212 354 2999 INFO@CANNYC.COM CANNYC.COM

Midtown

Howard Greenberg Gallery

Bruce Davidson: "East 100th Street", photography, Nov 5 thru Jan 2
41 E 57, 14th fl, 10022
212.334.0010 info@howardgreenberg.com
www.howardgreenberg.com Tue-Sat 10-6

Nohra Haime Gallery

Hugo Tillman: "Daydreams of Mine", Photography, Nov 11 thru Dec 5; Carol K. Brown: "Paperdolls", Painting, Nov 11 thru Dec 5; Pier Alli and Favi, Dec 9 thru Jan 16; Lina Leal, Dec 9th thru Jan 16
41 E 57, 6th fl, 10022
212.888.3550 info@nohrahaime.com
www.artnet.com Mon-Sat 10-6

Bill Hodges Gallery

Norman Lewis: "Black on White", drawings, Nov 12 thru Dec 12
24 W 57, 10019
212.333.2640 info@billhodgesgallery.com
www.billhodgesgallery.com Tue-Fri 10:30-6; Sat 12:30-5:30

Leonard Hutton Galleries

Post War American, Russian Avant-Garde, German Expressionism, European Modernism, Painting / Sculpture / Works On Paper
41 E 57, 6rd fl, 10022
212.751.7373 gallery@leonardhuttongalleries.com
www.leonardhuttongalleries.com Mon-Fri 10-5:30



International Center of Photography

Group Show: "Dress Codes: The Third ICP Triennial of Photography and Video", photography, Oct 2 thru Jan 17
1133 Avenue of the Americas at 43rd Street, 10036
212-857-0000 info@icp.org
www.icp.org Tue-Sat 10-6; until 8pm Fri

Jadite Galleries

A. Alonso, E. Garcia, S. Koch, E. Fuentes, L. Arbona: "Group Exhibition curated by Marta Sozzi", painting, Dec 1 thru Dec 15; Justin Waldinger: "NYC 24/7", photography, Dec 1 thru Dec 30; Rick Poston: "Nudes", photography, Dec 17 thru Jan 9
413 W 50, 10019
212.315.2740 jaditeart@aol.com
www.jadite.com Tue-Sat 12-6

Marlborough Gallery

Vincent Desiderio, "Studies and Works on Paper", Nov 17 thru Dec 31
40 W 57, 2nd fl, 10019
212.397.0317 info@marlboroughgallery.com
www.marlboroughgallery.com Mon-Sat 10-5:30

The Museum of Modern Art (MoMA)

"Monet's Water Lilies" thru Apr 12; "In Situ: Architecture and Landscape" thru Jan 18; "The Erotic Object: Surrealist Sculpture from the Collection", thru Jan 4; Paul Sietsema, thru Feb 15; "New Photography 2009", thru Jan 11; "Projects 91: Artur Zmijewski", thru Feb 1; Tim Burton, Nov 22 thru Apr 26; Gabriel Orozco, Dec 13 thru Mar 1; "Bauhaus Workshops/ Lounge", Nov 9 thru Jan 25
11 W 53, 10019
212.708.9400 info@moma.org
www.moma.org Sat-Mon, Wed-Thu 10:30-5:30; Fri 10:30-8

New Art Center

Nancy Pantirer: "Works on Paper", Mark Newton: "Fluid Plurality", Atara Grenadir: "Paintings", Dec 1 thru Dec 26
580 8th Avenue @ 38th Street, 10018
212.354.2999 info@newartcenter.net
www.newartcenter.net Tue-Sat 1-6

Michael Rosenfeld Gallery

Norman Lewis: "Pulse, A Centennial Exhibition", painting, Nov 5 thru Dec 23
24 W 57, 7th fl, 10019
212.247.0082 info@michaelrosenfeldart.com
www.michaelrosenfeldart.com Tue-Sat 10-6

Throckmorton Fine Art, Inc.

Ruven Afanador: "Mil Besos", photography, Oct 29 thru Dec 12; Tina Modotti, "Tina Under the Mexican Sky", Dec 17 thru Mar 6
145 E 57, 3rd, 10022
212.223.1059 kraige@throckmorton-nyc.com
www.throckmorton-nyc.com Tue-Sat 10-6

Zabriskie Gallery

Richard Stankiewicz, Sculpture, thru Nov 7; Yasuo Kuniyoshi, painting / drawing, Nov 10 thru Jan 9
41 E 57, 4th fl, 10022
212.752.1223 info@zabriskiegallery.com
www.zabriskiegallery.com Tue-Sat 10-5:

NANCY PANTIRER

Elements of Illusion



Elements of Illusion Series, 2009, acrylic on canvas, 48" x 48"

December 1 - 26, 2009



580 8th Avenue @ 38th Street NYC 10018 212.354.2999 info@newartcenter.net

Uptown

Ubu

"Modern Collage, Victorian Engravings & Nostalgia", Oct 30 thru Jan 30
416 E 59, 10022
212.753.4444 info@ubugallery.com
www.ubugallery.com By Appointment only

Michael Werner

Jörg Immendorff: "Maoist Paintings - The Early Seventies", thru Dec 19
44 E. 77, 10021
212.988.1623 info@michaelwerner.com
http://www.michaelwerner.com/ Mon-Sat 10-6

Whitney Museum of American Art

"Georgia O'Keeffe: Abstraction" January 17; A Few Frames: Photography and the Contact Sheet", thru January 3, 2010
945 Madison Ave at 75th, 10021
212.570.3676 info@whitney.org
www.whitney.org Wed, Thu, Sat, Sun 11-6, Fri 1-9

Wildenstein & Co. Inc.

Representing some of America's foremost living artists as well as the estates of major figures of modern art.
19 E 64, 10021
212.879.0500 info@wildenstein.com
www.wildenstein.com Mon-Sat 10-5



Brooklyn

Art 101, Inc.

Group Show: "December Special", mixed media, Dec 4 thru Dec 21
101 Grand Street, 11211
718.302.2242 info@art101brooklyn.com
www.art101brooklyn.com Fri-Sun 1-6

Brooklyn Museum of Art

"Reflections on the Electric Mirror: New Feminist Video", thru Jan 10; Patricia Conin, "Harriet Hosmer, Lost and Found", thru Jan 24; "From the Village to Vogue: The Modernist Jewelry of Art Smith", thru Feb 21
200 Eastern Parkway, 11238
718.638.5000 information@brooklynmuseum.org
www.brooklynmuseum.org Wed-Sun 10-5; Sat-Sun 11-6

Causey Contemporary

Steven Dobbin: "Reclamation", Found object installation & sculpture, Nov 12 thru Dec 8
293 Grand St, 11211
718.218.8939 info@chiccontemporaryfineart.com
www.chiccontemporaryfineart.com Wed-Sun 11-7, Mon 9-5

Front Room Gallery

FUSE WORKS, "Multiples and Editions", Dec 4 thru Dec 30
147 Roebling Street, 11211
718.782.2556 info@frontroom.org
www.frontroom.org Fri-Sun 1-6; by appt

Kentler International Drawing Space

"Reinventing Silverpoint", curated by Susan Schwalb & Margaret Mathews-Berenson
353 Van Brunt St, 11231
718.875.2098 info@kentlertgallery.org
www.kentlertgallery.org Thu-Sun 12-5

McCaig-Welles Gallery

"Little Creatures", Group Show
129 Roebling St, 11211
718.384.8729 melissa@mccaigwelles.com
www.mccaigwelles.com Tue-Fri 11-7; Sat-Sun 12-7

Parker's Box

Group Show: "NotAbstract 1", mixed media, thru Dec 20
193 Grand Street, 11211
718.388.2882 info@parkersbox.com
www.parkersbox.com Fri-Mon 1-7

Pierogi / The Boiler

Gallery one, John Stoney, sculpture / drawing, Nov 20 thru Dec 20; Gallery two, Johan Nobell, painting, Nov 20 thru Dec 20
177 N 9th St; 191 N 14th St, 11211
718.599.2144 info@pierogi2000.com
www.pierogi2000.com Thu-Mon 12-6

Williamsburg Art & Historical Center (WAH)

Rossukhon Songkhum, Oct 18 thru Dec 13; Contemporary Works from the Permanent Collection, Part 2, thru Dec 35
35 Broadway, 11211
718.486.6012 wahcenter@earthlink.net
www.wahcenter.net Sat-Sun 12-6

JUVENAL REIS STUDIOS

A COMMUNITY OF INTERNATIONAL, PROFESSIONAL AND EMERGING ARTISTS

43-01 22ND STREET, LONG ISLAND CITY, NY 11101. (JUST BLOCKS FROM P.S.1)
Take E/V train to 23rd/Ely Ave. - 7 train to 45th RD/Court House Sq. - N train to Queensboro Plaza

Visit our site to contact over 130 artists

If you need a studio to work ... give us a call

web : JuvenalReisStudios.com | e-mail : studios@JuvenalReisStudios.com | phone : 718-570-3663

Queens

AES Gallery

Please call for schedule
44-02 23 St, LIC 11101
718.249.9359 info@galleryaes.com
www.galleryaes.com Tue-Sat 11-5

Dean Project

Sangbin Im, Palma Blank-Rosenblum and Kris Tamburello:
"Parallel States", Dec 12 thru Feb 14
4543 21 St, LIC 11101
718.706.1462 info@deanproject.com
www.deanproject.com Thu-Sun 12-6; Mon by appt.

Deitch Projects

Keith Haring: "The Ten Commandments", Nov 08 thru Feb 15
4-40 44th Drive, Long Island City 11101
212.343.7300 info@deitch.com
www.deitch.com Thu-Sun 2-8

Juvenal Reis Studios

A community of international, professional and emerging artists
43-01 22nd St., 11101
718.875.2098 studios@juvenalreisstudios.com
www.juvenalreisstudios.com Mon-Fri 9-5

M55 Art

"40 x 19 x 11", an exhibition of emerging artists, thru Dec 6;
"A Night 1001 Prints", winter benefit, Dec 17 thru Dec 20
44-02 23rd Street, ground floor, 11101
718.729.2988 eddo52@verizon.net
www.55mercergallery.com Thu-Sun 12-6

P.S.1 Contemporary Art Center

Robert Bergman: "Selected Portraits", Photography, Oct 25 thru Jan 4; "Between Spaces", junior curatorial staff show, Oct 25 thru Apr 5; "1969", Work from the collection produced in '69, Oct 25 thru Apr 5
22-25 Jackson Ave, LIC 11101
718.784.2084 mail@ps1.org
www.ps1.org Thu-Mon 12-6

QCC Art Gallery

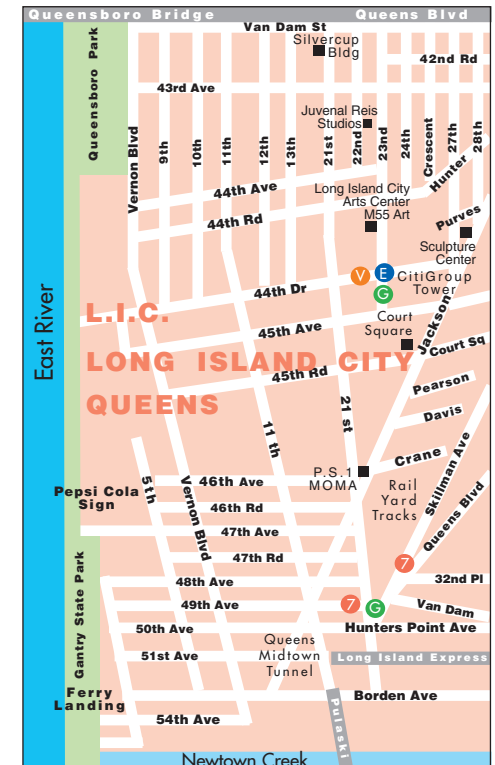
Quintana Martello: "Memoria"; Permanent Collection of African Art; Marlene Tseng Yu: "March of the Icebergs"; Judith Ziechner, all thru Feb
222-05, 56th Ave, 11364
718.631.6396 QCCArtGallery@qcc.cuny.edu
www.qccartgallery.org Tue-Fri 10-5; Sat-Sun 12-5

Socrates Sculpture Park

"Emerging Artist Fellowship Exhibition", thru March 8;
"Open Space: Pentti Monkkonen, Temple of Dionysos";
"Broadway Billboard: Stephen Shore, Amarillo, Texas, July, 1972"
Broadway @ Vernon Blvd, LIC 11106
718.956.1819 info@socratessculpturepark.org
www.socratessculpturepark.org Daily 10-

The Space L.I.C.

"Radar Eyes", prints from 50 international artists, curated by Seripop and Reuben Kincaid, Nov 6 thru Dec 30
25-17 41st Ave, LIC 11101
718.752.0331 info@licspace.org
www.licspace.org Wed & Fri 12-9; Thu & Sat 12-6





National - Chicago

Art Institute of Chicago

"500 Ways of Looking at Modern, a yearlong exploration of what modern means", thru June 30
 111 S Michigan Av, 60603
 312.443.3600
www.artic.edu

Museum of Contemporary Art Chicago

"Alexander Calder in Focus", sculpture, thru Feb 14
 220 E Chicago Av, 60611
 312.397.4095
www.mcchicago.org

Roy Boyd

Brigitte Riesebrodt: Metamorphoses, Oct 30 thru Jan 5
 739 N Wells St, 60654
 312.642.1606 info@royboydgallery.com
www.royboydgallery.com Tue-Sat 10-5:30

Dubhe Carreño

Pamela Murphy and Amanda Brea: "Coalescence", Nov 20 thru Jan 2
 118 N Peoria St, 2nd Fl, 60607
 312.666.3150 info@dubhecarrenogallery.com
www.dubhecarrenogallery.com Tue-Sat 10:30-5:30

Melane Cooper

Kathleen Waterloo: "map quest", Nov 6 thru Dec 30;
 Julie Karabenick: "just around the block", Nov 6 thru Dec 30
 740 N Franklin, 60654
 312.202.9305 mcoopergallery@aol.com
www.melaneecoopergallery.com Tue-Sat 11-5

Richard Gray

Jim Dine: "Old Me, Now: Self Portrait Drawings 2008-2009", Nov 20 thru Jan 16
 875 N Michigan Av, Ste 2503, (John Hancock Bldg) 10014
 312.642.8877 info@richardgraygallery.com
www.richardgraygallery.com Mon-Fri 10-4:30

Carl Hammer

"Wilson Snowflake Bentley: 1866-1931", Snowcrystals in vintage photomicrographs, Dec 4 thru Jan 30
 740 N Wells St, 60654
 312.266.8512 hammergeall@aol.com
www.hammergeall.com Tue-Fri 11-6; Sa 11-5

Richard Norton

Specializing in Impressionist and Modern paintings, drawings, and sculpture from the late nineteenth and early twentieth centuries
 612 Merchandise Mart, 60654
 312.644.8855 info@richardnortongallery.com
www.richardnortongallery.com Mon-Fri 9-5

Carrie Secrist

Douglas C. Bloom: "New Painting", Nov 14 thru Jan 9;
 Liliana Porter, video, prints Nov 14 thru Jan 9
 835 W Washington Blvd, 60607
 312.491.0917 info@secrestgalleries.com
www.secrestgalleries.com Tue-Fri 11-6

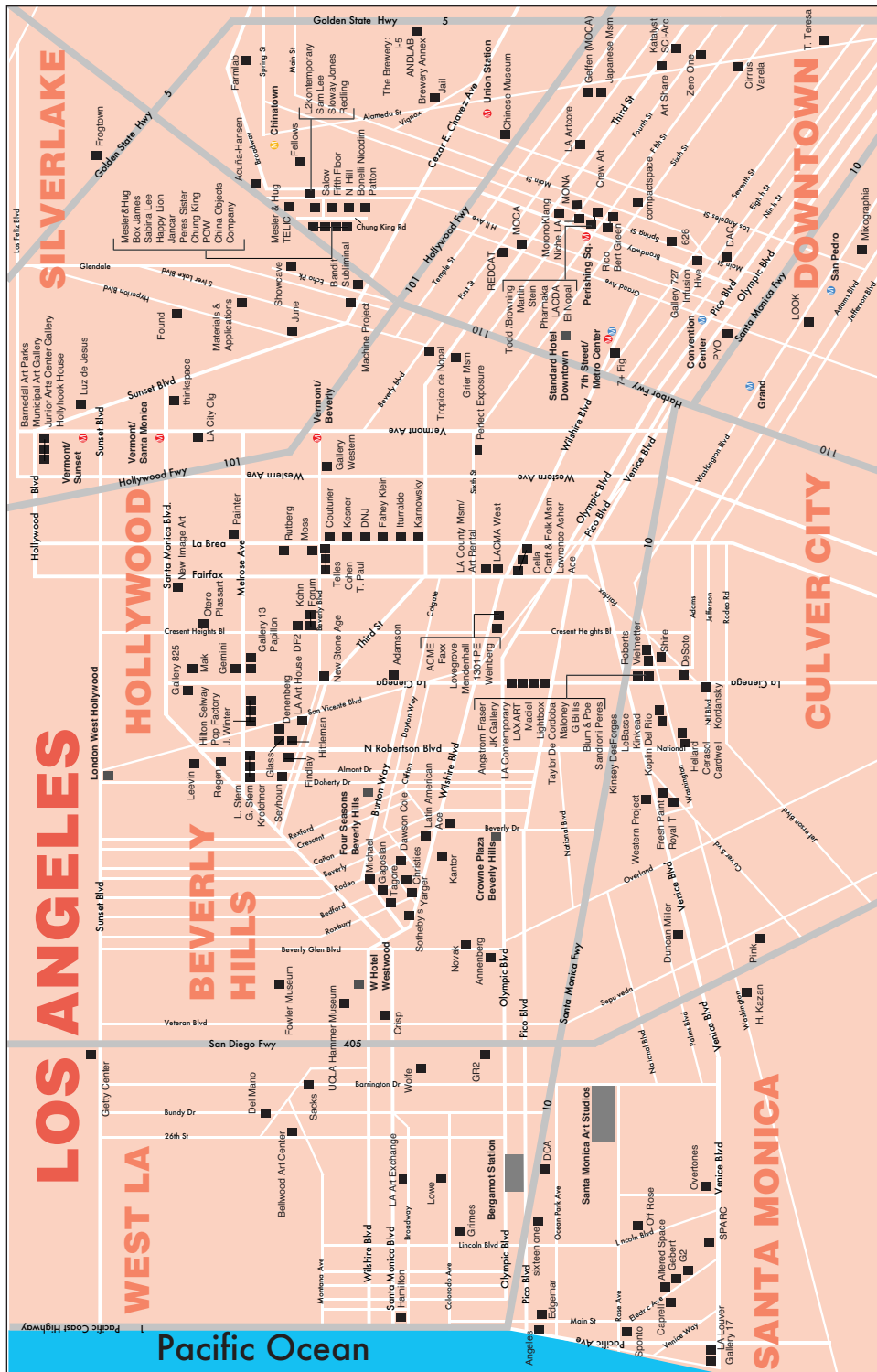


A charming European style boutique hotel.

Just off the Magnificent Mile & minutes from Navy Pier.

The Seneca

200 East Chestnut • Chicago
 1.800.800.6261
senecahotel.com



National - Los Angeles

ACE Gallery

John Millei: "Maritime", thru Feb; John Millei: "Woman in a Chair", thru Jan 20
 9430 Wilshire Blvd / 5514 Wilshire Blvd
 Beverly Hills / Los Angeles, CA 90212 323.935.4411
info@acegallery.net www.acegallery.net

Anderson Galleries

Barbizon, Academic, Impressionist and Post-Impressionist Paintings
 354 N. Bedford Dr, Beverly Hills CA 90210
 310.858.1644 info@andersongalleries.com
www.andersongalleries.com

George Billis Gallery

Jared Joslin, painting, Nov 7 thru Dec 19; Carol Goleboski, photography, Nov 7 thru Dec 19
 2716 S. La Cienega Blvd, Los Angeles CA 90034
 310.838.3685 info@georgebillis.com
www.georgebillis.com

Blum & Poe Gallery

Sharron Lockheart: "Lunch Break", Nov 21 thru Jan 9
 2727 S. La Cienega Blvd, Los Angeles CA 90034
 310.836.2062 info@blumandpoe.com
www.blumandpoe.com

Carmichael Gallery

Dan Witz: "Dark Doings", thru Dec 3; "Chile Estyle: a group show of all Chilean artists curated by Pablo Aravena", Dec 10 thru Dec 23
 1257 N. La Brea Av, West Hollywood CA 90038
 323.969.0600 info@carmichaelgallery.com
www.carmichaelgallery.com Tue-Sun 1-7

The Company

"Alexander May", Installation, Nov 21 thru Jan 2
 946 Yale Street #39F, Los Angeles CA 90012
 213.221.7082 info@thecompanyart.com Thu-Sun 12-6, by appt

Chung King Project

Dan Bayles, "New Paintings", extended thru Jan 23
 510 Bernard St, Los Angeles CA 90012
 213.625.1802 info@chungkingproject.com
www.chungkingproject.com

Honor Fraser

Tomoo Gokita, painting, Nov 7 thru Dec 19
 2622 S. La Cienega Blvd, Los Angeles CA 90034
 310.837.0191 info@honorfraser.com
www.honorfraser.com

Gagolian Beverly Hills

Jeff Koons: "New Paintings", Nov 14 thru Jan 9
 456 N. Camden Dr, Beverly Hills CA 90210
 310.271.9400 info@gagolian.com
www.gagolian.com

JK Gallery

Janis Goodman and Jessica McCamby, painting / installation, Nov 7 thru Dec 19
 2632 S. La Cienega Blvd, Los Angeles CA 90034
 310.837.3330 info@jkgallery.net
www.jkgallery.net

Kinkead Contemporary

Tracy Nakayama, drawings, Nov 7 thru Dec 19
 6029 Washington Blvd, Culver City CA 90232
 310.838.7400 info@kinkeadcontemporary.com
www.kinkeadcontemporary.com

Koplin Del Rio Gallery

Zhi Lin: "Invisible and Unwelcomed People: Chinese Railroad Workers", drawings, Nov 7 thru Dec 19
 6031 Washington Blvd, Culver City CA 90232
 310.836.9055 info@kopлиндelrio.com
www.kopлиндelrio.com

David Kordansky Gallery

Rashid Johnson: "Other Aspects", thru Jan 16
 3143 S. La Cienega Blvd, Unit A, Los Angeles CA 90016
 323.222.1482 info@davidkordanskygallery.com
www.davidkordanskygallery.com

LA Contemporary

Huguette Caland: "Autumn", painting, Nov 7 thru Dec 19
 2634 S. La Cienega Blvd, Los Angeles CA 90034
 310.559.6200 info@lacontemporary.com
www.lacontemporary.com Tue-Sat 11-5

Sam Lee Gallery

"Locating Landscapes: New Strategies, New Technologies", curated by Kate Palmer Albers, thru Dec 5
 990 N. Hill St, #190, Los Angeles CA 90012
 323.227.0275 info@samleegallery.com
www.samleegallery.com





December 2 - 6, 2009

31st St and NE 1st Avenue
Wynwood Art District, Miami
www.reddotfair.com



National - San Francisco

Asian Art Museum of San Francisco
"Photographic Memories", Photographs thru Jan 17
200 Larkin St, Civic Center, 94102
415.581.3500 pr@asianart.org
www.asianart.org Tue-Sun 10-5

Fraenkel Gallery
Carleton Watkins: "Discoveries", photography, Nov 5 thru Jan 49
49 Geary St, San Francisco CA 94108
415.981.2661 mail@fraenkelgallery.com
www.fraenkelgallery.com Tue-Fri 10:30-5:30, Sat 11-5

Hackett-Freedman Modern Gallery
20th century and contemporary painting and sculpture, with a focus on postwar American and Californian works.
250 Sutter St, 94108
415.362.7152 www.realart.com
By Appointment Only

Haines Gallery / Haines Projects
Kota Ezawa: "Odessa Staircase Redux", Oct 22 thru Dec 24;
Katya Bonnenfant: "Hortensia Suitcase Deluxe", Oct 22 thru Dec 24
49 Geary St, 5th Fl, / 1661 Tennessee Street, 3Q 94108
415.397.8114 info@hainesgallery.com
www.hainesgallery.com By appointment only

Jack Hanley Gallery
Colter Jacobsen: "Moby Dick", at CCA Wattis Institute, thru Dec 12
395 Valencia St, 94103
415.552.1623 info@jackhanley.com
www.jackhanley.com Tue-Sat 11-6

Hosfelt Gallery
Andrea Higgins: "Appearance" thru Dec 5; Ruth Marten: "Side-Saddle", thru Dec 5; Gerhard Mayer: "Organic Virtual Aseptic Lines", thru Dec 5
430 Clementina St, 94103
415.495.5454 infosf@hosfeltgallery.com
www.hosfeltgallery.com Tue-Sat 11-5:30

Jenkins Johnson Gallery
"On Paper", Group Exhibition, thru Dec 5; Group Show: "Winter Haiku", Dec 10 thru Jan 30 (also see Chelsea listings)
464 Sutter St, 94108
415.677.0770 sf@jenkinsjohnsongallery.com
www.jenkinsjohnsongallery.com Tue-Fri 10-6, Sat 10-5

George Krevsky Gallery
Lawrence Ferlinghetti, painting, drawing Nov 5 thru Dec 19
77 Geary St., 94108
415.397.9748

Modernism, Inc.
Mark Stock and Caherine Courtenaye, painting, Nov 5 thru Dec 23
685 Market St., 94105
415.541.0461 info@modernisminc.com
www.modernisminc.com Tue-Sat 10-5:30

John Pence Gallery
Jacob Pfeiffer and Zack Zdrate: "Recent Oil Paintings"
Nov 20 thru Dec 19
750 Post St., 94109
415.441.1138 art@johnpence.com
www.johnpence.com Mon-Fri 10-6, Sat 10-5

MESSINEO ART PROJECTS WYMAN CONTEMPORARY



"PERSPECTIVES"
contemporary color photography

Celeste Fichter
Jim Knight
Andrea Sanders

December 2 January 23
Wed - Sat 12 - 5pm & by appointment

227 W 29th Street, 4th fl, New York, NY 10001
212.414.0827 messineowyman.com

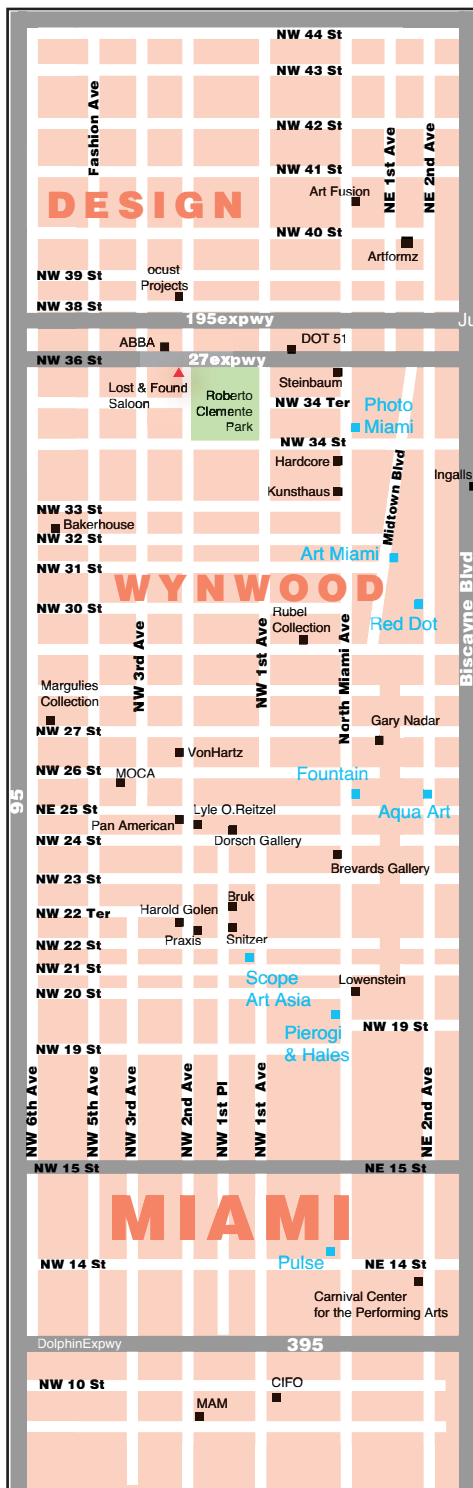
San Francisco Museum of Modern Art (SF MOMA)

"Focus on Artists: Selections from the Collection", Oct 22 thru May 23; "On View: Candice Breitz", Oct 01 thru Dec 20; "The Provoke Era: Postwar Japanese Photography", Sep 12 thru Dec 20
151 Third St, 94103
415.357.4000 collections@sfmoma.org
www.sfmoma.org Mon-Tue 11-5:45, Thu 11-8:45, Fri-Sat 11-5:45

San Francisco Open Studios
Holiday print sale, Dec 4; Rebecca Fox: "Metal Sculpture", holiday show, Dec 6
934 Brannon St., 94103
415.861.9838 info@artspan.org
www.artspan.org Mon-Fri 9-5, by appt

Andrea Schwartz Gallery
Howard Hersh, encaustic, Nov 11 thru Dec 18
525 2nd St, 94107
415.495.2090 info@asgallery.com
www.asgallery.com Mon-Fri 9-5, Sat 1-5

Yerba Buena Center for the Arts
"When Lives Become Form: Contemporary Brazilian Art, 1960s to the Present", Nov 5 thru Jan 31
701 Mission St., 94103
415.978.2787
comments@YBCA.org www.ybac.org
Thu-Fri 2-8, Sat 12-8, Sun 12-6, First Tue 12-8



National - Miami

Brevards Gallery

"Non-Duality", sculpture, thru March 2010
 2320 N Miami Ave, Miami, FL 33127
 305.576.5747 info@brevards.com
 www.brevards.com Tue-Sat 8am-11pm

Harold Golen Gallery

Pop Surrealist Gallery in Wynwood
 2294 NW 2nd Ave, Miami, FL 33127
 305.989.3359 harold@haroldgolengallery.com
 www.haroldgolengallery.com Sat 1-5, second Sat 7-11

The Dorsch Gallery

Robert Ransom Thiele: "30", sculpture, Nov 28 thru Dec 31
 151 NW 24 Street, 33127
 305.576.1278 info@dorschgallery.com
 www.dorschgallery.com Tue-Sat 11-6

ABBA Fine Art

Group Show: "ZING", Nov 14 thru Dec 18
 233 NW 36th Street, 33127
 305.576.4278 info@abbafineart.com
 www.abbafineart.com Tue-Fri 12-5, Sat by appt

Margulies Collection at the WAREHOUSE

An extensive collection of contemporary and vintage photography, video, sculpture and installation from the holdings of the prominent collector Martin Z. Margulies
 591 NW 27th Street, 33127
 305.576.1051 info@margulieswarehouse.com
 www.margulieswarehouse.com

Miami's Premiere
 Pop Surrealist Gallery
 2294 North West 2nd Avenue
 (Wynwood Art District)
haroldgolengallery.com

305-989-3359

MIAMI Locations & Public Hours

Art Basel Miami Beach

Miami Beach Convention Center
 1901 Convention Center Dr, Miami Beach
 Thu Dec 3 thru Sat Dec 5, 12-8
 Sun Dec 6, 12-6 p.m.

Art Miami

Art Miami Pavilion, Midtown Blvd
 (NE 1st Ave) btwn NE 32nd & NE 31st St
 Wynwood
 Wed Dec 2 thru Sat Dec 5, 11-7
 Sun Dec 6, 11-6

Scope /Art Asia Miami

Soho Studios, 2136 NW 1st Ave
 (at NW 21st St), Wynwood
 Thu Dec 3 thru Sat Dec 5, 11-7
 Sun Dec 6, 11-6

Pulse

Ice Palace, 1400 N Miami Ave,
 Miami (near Wynwood)
 Thu Dec 3, 1-8
 Fri Dec 4 thru Sun Dec 6, 10-7

Photo Miami

3401 N Miami Ave (at NW 34th St)
 Wed Dec 2, 11-3
 Thu Dec 3 thru Sat Dec 5, 11-7
 Sun Dec 6, 11-6

Aqua Art

42 NE 25th St (at N Miami Ave), Wynwood
 Thu Dec 3, 1-7
 Fri Dec 4 thru Sat Dec 5, 11-7
 Sun Dec 6, 11-4

Red Dot

3011 NE 1st Ave at NW 31st St, Wynwood
 Thu Dec 3, 11-7
 Fri Dec 4 thru Sat Dec 5, 11-8
 Sun Dec 6, 11-6

Fountain Art Fair

2505 North Miami Ave, Wynwood
 Thur Dec 3 thru Sun 6, 11-7

NADA Art Fair

Deauville Beach Resort, 6701 Collins Ave
 Miami Beach
 Thu Dec 3, 2-8
 Fri Dec 4 thru Sat Dec 5, 10-8
 Sun Dec 6, 10-4

INK

Suites of Dorchester, 1850 Collins Avenue
 Miami Beach
 Wed Dec 2, 12-7
 Thu Dec 3 thru Sat Dec 5, 10-7
 Sun Dec 6, 10-3

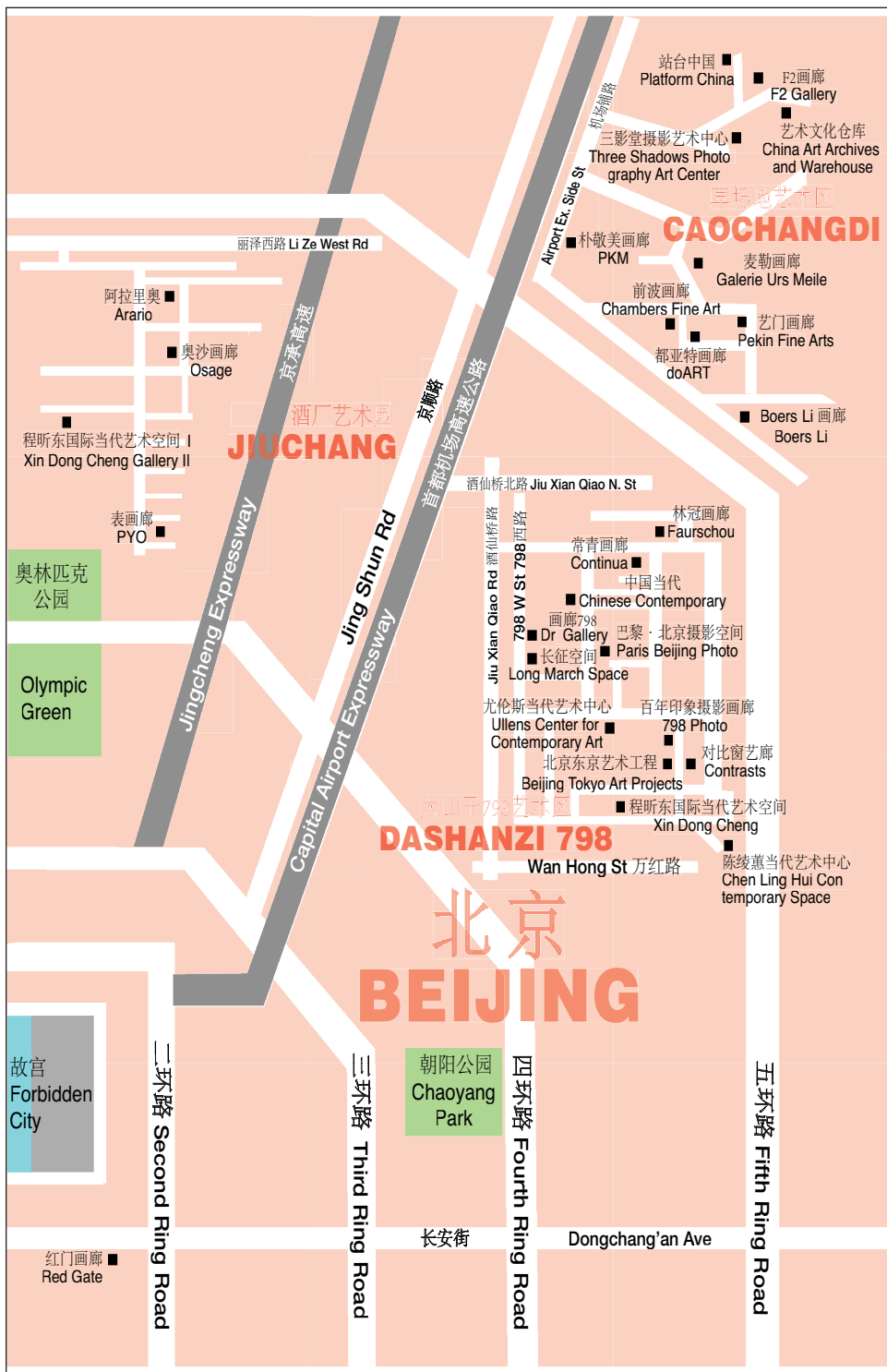
Pool

Carlton Hotel, Collins Ave (at 14th St)
 Miami Beach
 Fri Dec 4 thru Sun Dec 6, 3-10



Openings

December	1	Tuesday	December	9	Wednesday
Soho Soho Photo Gallery Group Show 6-8 Soho Photo Gallery Daniel Morel 6-8			Village/LES White Box Hans Breder 6-9 Umbrella Arts - Bodell Fahey Group Show 6-8		
December	10	Thursday			
Midtown Jadite Galleries A. Alonso, E. Garcia, S. Koch, E. Fuentes, L. Arbona, curated by Marta Sozzi 6-8 Jadite Galleries Justin Waldinger 6-8 Gallery Korea Contemporary Korean Art in NY 6-8			Village/LES Sylvia Wald & Po Kim Contemporary Korean Art in NY 6-8		
Miami Art Miami First View 5:30-7 Art Miami VIP Preview 7-10:30 Photo Miami VIP Opening Night Reception 6-10			Chelsea Stately Wise Ellen Von Unwerth 6-8 Metro Picture Robert Longo 6-8 Gladstone Gallery Sharon Lockhart 6-8 High Line Gallery Appleby, Levine, Albert 6-8 Andrew Edlin Group Show, curated by Scott Hug 6-8		
December	2	Wednesday			
Miami INK Opening Brunch 10-12 Scope VIP First View 11-6 Art Asia Miami VIP Vernissage 11-6 Art Asia Miami Cocktail Reception 4-6 Red Dot VIP Preview 5-6 Red Dot Green Miami Reception 6-9 Art Basel Miami Beach VIP Vernissage 6-9 Art Basel Miami Beach MOCA reception 7-9			Midtown New Art Center N. Pantirer, M. Newton, A. Grenadir 6-8		
December	3	Thursday			
Chelsea Agora Gallery Group Show 6-8 Agora Gallery Ruth Gilmore Langs 6-8 Soho20 Chelsea Group Show 6-8 Blue Mountain Group Show 6-8 Blank Space Group Show 6-8 J. Cacciola Eddie Kennedy, Ron Kingswood 6-8			Brooklyn Causey Contemporary KX2 6-9 Los Angeles ACE Gallery LA John Millei 7-9 ACE Gallery Beverly Hills John Millei 7-10		
Miami Aqua Art Miami VIP Preview Brunch 10-1 Pulse Miami VIP Private Preview 10-1 NADA Miami Opening Preview 10-2 Fountain VIP Preview 11-7 Aqua Art Miami Gen Art Vanguard Official Party 8-11+			December 11 Friday		
December	4	Friday			
Brooklyn Art 101 Group Show 7-9			Brooklyn Causey Contemporary Magnolia Laurie, KX2 6-9 Front Room Fuse Works 6-9		
Chicago Carl Hammer Wilson Snowflake Bentley 5:30-8			LES Ward-Nasse Gallery Curated by Carmen Pousada 7-10 Zürcher Studio Group Show 6-8		
Miami Brevards Gallery VIP event 7:30-12 Pool Opening Reception 6-10 Fountain Reception for the Artists 7-12			Chelsea First Street Gallery Group Show 2-5 Gallery 303 Tim Gardener 6-8		
December	5	Saturday			
Miami ABBA Fine Art M magazine VIP Event 7-10			Queens Dean Project Group Show 6-9		
December	6	Sunday			
Queens Queens Museum Contemporary Korean Art in NY 2-5			December 15 Tuesday		
December	8	Tuesday			
Midtown Nohra Haime Gallery Pieralli and Favi, Lina Leal 6-8			LES Envy Desi Santiago, Jared Buckheister 6-8		
December 16 Wednesday			Midtown Gabarron Foundation <i>BILBAO ARTE NEW YORK</i> 6-8		
December 17 Thursday			Midtown Hunter College Times Square Gallery MFA Thesis Exhibition 6-8		
December 18 Thursday			Chelsea Agora Gallery Group Show 6-8		
December 8 Tuesday			Queens M55 Winter Charity Print Show 5-8		
December 10 Thursday			Chelsea Allen Sheppard Gallery Molly Cliff Hills 6-8		



International - Shanghai

Contrasts Gallery

Bingyi: "Skin", Nov 22 thru Dec 22; Yi Zhou: "The Ear", video, Nov 8 thru Dec 25
181 Middle Jingxi Rd, Shanghai 20002
+86.21.6323.1989
www.contrastsgallery.com

MOCA Shanghai

Animamix Biennial Nov thru Feb
People's Park, 231 Nanjing West Road, Shanghai 200003
+86.21.6321.9900 info@shanghartgallery.com
www.mocashanghai.org Mon-Sun 10-6; Wed 10-10

1918 ArtSPACE Shanghai

Huang He: "A Struggle of Life and Death", painting, installation, thru Dec 3
No.78 Changping Rd, Jing'An District, Shanghai 200041
+86.21.5228.6776 info@1918artspace.com
www.1918artspace.com
No.78 Changping Rd, Jing'An District

Elisabeth de Brabant

Leng Hong: "Scented Seasons", painting, thru Jan
No. 299 Fuxing West Road near Huashan Road, 200031
+86-021-6466-7428 www.elisabethdebrabant.com
Tue-Fri 10-6:30; Sat, Sun 1:30 - 6:30 PM

M97 Gallery

Chen Wei Solo Exhibition, photography from 2007-2009, Nov 14 thru Jan 15
No. 97 Moganshan Rd. 2nd floor, 200060
+86-021-6266-1597 info@m97gallery.com
www.m97gallery.com

ifa gallery

Winter group exhibition, Nov 28 thru Jan 24
621 Changde Road, (near Wuding Road), 200040
+862162560835 contact@ifa-gallery.com
www.ifa-gallery.com Tue-Sun 10-7; by appointment

International - Beijing

Pekin Fine Arts

Tsang Kin-Wah: "The Third Seal-They Are Already Old. They Don't Need To Exist Anymore", prints, thru 18 Jan
No. 241 Cao Chang Di Village, Cui Ge Zhuang, Chaoyang District, Beijing 100105
+8610.5127.3220
www.pekinfinearts.com Wed-Sun 10-6

Chambers Fine Art- Beijing

Yang Lei, Hong Hao: "Spark", Installation, Oct 31 thru Dec 12
Red No. 1-D, Cao Chang Di Village, Chaoyang District, Beijing 100015
+8610.5127.3298 bji@chambersfineart.com
www.chambersfineart.com Tue-Sun 10-6

Red Gate Gallery

"30 Degrees: 30 Years - 30 Artists - 30 Perspectives", curated by George Michell and Brian Wallace, Nov 14 thru Dec 13
Levels 1 & 4, Dongbianmen Watchtower Chongwenmen, Beijing 100600
+8610.6525.1005
www.redgategallery.com Sun-Sat 10-5

Auctions

Christie's

20 Rockefeller Plaza, 5th fl, New York, NY 10020
T 212.636.2000 F 212.636.4928
www.christies.com

Doyle New York

175 E 87, New York, NY 10128
T 212.427.2730 F 212.369.0892
www.doylenewyork.com

Phillips de Pury & Co.

450 W 15, New York, NY 10011
T 212.940.1200 www.phillipsdepuryc.com

Sotheby's

1334 York Ave, New York, NY 10021
T 212.606.2000 F 212.606.7833
www.sothebys.com

Leslie Hindman Auctioneers

1338 West Lake St, Chicago, IL 60607
T 312.280.1212
www.lesliehindman.com

Bonhams & Butterfields San Francisco

220 San Bruno Ave, San Francisco, CA 94103
T 415 861 7500 F 415 861 8951
www.bonhams.com



"This is the most comprehensive and thorough guide to galleries I have ever come across.



It's all you'll ever need if you are interested in discovering great art in New York."

Ken Johnson
The New York Times



M subscribe
theMmag.com



1918 ArtSPACE Shanghai 63
532 Gallery / Thomas Jaeckel 37

A

ABBA Fine Art 59
ACA Galleries 37
ACE Gallery - Beverly Hills 55
AES Gallery 51
Agora Gallery 37
Brooke Alexander 36
Americas Society 48
Anderson Galleries 55
Andrea Schwartz 57
Art 101 50
Art Institute of Chicago 53
Asia Society 44
Asian Art Museum of San Francisco 57

B

Barry Friedman Ltd. 37
Nathan A. Bernstein & Co., Ltd. 48
Björn Ressel Gallery 48
BLT Gallery 35
Blue Mountain Gallery 37
Blum & Poe 55
Bonhams & Butterfields San Francisco 63
Roy Boyd 53
Brevards Gallery 59
Brooklyn Museum of Art 50

C

J. Cacciola Gallery 37
Carmichael Gallery 55
Caussey Contemporary 50
Chambers Fine Art 37
Chambers Fine Art - Beijing 63
Cheim & Read 37
Chelsea Art Museum 37
China Institute 48
China Square 35
Christie's 63
Chung King Project 55
Ethan Cohen Fine Arts 36
Contrasts Gallery 63
Melanie Cooper 53
CSV 35
Betty Cunningham Gallery 41

D

David Kordansky 55
DC Moore Gallery 44
Dean Project 51
Deitch Projects 36, 51
Dickinson Roundell Inc. 48
Dorsch Gallery 59
Doyle New York 63
The Drawing Center 36
Dubhe Carreño 53

E

Andrew Edlin Gallery 41
Elisabeth de Brabant 63

F

Feature Inc 35
Ronald Feldman Fine Arts 36
First Street Gallery 41
Forum Gallery 44
Fountain Gallery 44
Fraenkel Gallery 57
The Frick Collection 48
Front Room Gallery 50

G

Gallery Korea 44
The Galbarron Foundation, Carriage House Center for the Arts 44
Gagosian 41
Gagosian Gallery 41, 48, 55
Galerie St. Etienne 44
HP Garcia Gallery 44
Gemini G.E.L. at Joni Moisant Weyl 48
George Billis 55

George Billis Gallery 41
George Krevsky 57
Gladstone Gallery 41
Goedhuis Contemporary 48
Harold Golen Gallery 59
Richard Gray 53
Richard Gray Gallery 48
Howard Greenberg 46
Guggenheim Museum 49

H

Nohra Haime Gallery 46
Haines Gallery 57
Carl Hammer 53
Hirschl & Adler 49
Irena Hochman Fine Art Ltd 49
Bill Hodges Gallery 46
Honor Fraser 55

I

International Center of Photography 46

J

Jack Hanley Gallery 57
Jadite Galleries 46
Jenkins Johnson 41, 57
The Jewish Museum 49
JK Gallery 55
Jo-An Fine Art Gallery 49
John Pence Gallery 57
Juvenal Reis Studios 51

K

Jim Kempner Fine Art 41
Kent Gallery 41
Kentler International Drawing 50
Anton Kern Gallery 41
Kinkead Contemporary 55
Kips Gallery 41
Knoedler & Co. 49
Koplin Del Rio 55

L

Lehmann Maupin 35
LA Contemporary 55
Lehmann Maupin Gallery 42
Leonard Hutton Galleries 46
Leslie Hindman Auctioneers 63
Lincoln Center Gallery 49
LTMH 49

M

M55 Art 51
M97 Gallery 63
Robert Mann Gallery 42
Marguiles Collection 59
Kathryn Markel Fine Arts 42
Marlborough 46
Matthew Marks Gallery 42
McCaig-Welles Gallery 50
McKenzie Fine Art 42
Messineo Art Projects 42
Metro Pictures Gallery 42
Metropolitan Museum of Art 49
Robert Miller Gallery 42
Mixed Greens 42
MOCA Shanghai 63
Modernism, Inc. 57
MoMA 46
Galerie Murlot 49
El Museo Del Barrio 49
The Museum at FIT 42
Museum of Contemporary Art Chicago 53

N

NY Studio Gallery 35
The National Academy Museum 49
Neue Galerie New York 49
New Art Center 46
The New Museum 35
Richard Norton 53

O

OK Harris Works of Art 36

P

P.S.1 Contemporary Art Center 51
Parker's Box 50
Pekin Fine Arts 63
The Pen and Brush, Inc. 35
The Phatory Ilc 35
Phillips de Pury & Co 63
Pierogi 50

Q

QCC Art Gallery 51

R

Red Gate Gallery 63
Reeves Contemporary 42
Riccio / Maresca 42
Andrea Rosen 42
Michael Rosenfeld Gallery 46
Michelle Rosenfeld 49

S

Soho20 Chelsea 44
Sam Lee Gallery 55
San Francisco Open Studios 57
Carries Secrist 53
SF MOMA 57
Jack Shainman Gallery 42
The Anita Shapolsky Gallery 49
Allen Sheppard Gallery 42
Socrates Sculpture Park 51
Soho Photo Gallery 36
Sotheby's 63
Staley-Wise Gallery 36
Robert Steele Gallery 44
Maya Stendhal Gallery 44
Allan Stone 49
Stricoff 44
Studio 601 44
Stefan Stux Gallery 44

T

The Company 55
The Space L.I.C. 51
Paul Thiebaud Gallery 49
Erik Thomsen LLC Asian Art 49
Throckmorton Fine Art, Inc. 46

U

Ubu 50
Umbrella Arts - Bodell Fahey 35

V

Von Lintel Gallery 44

W

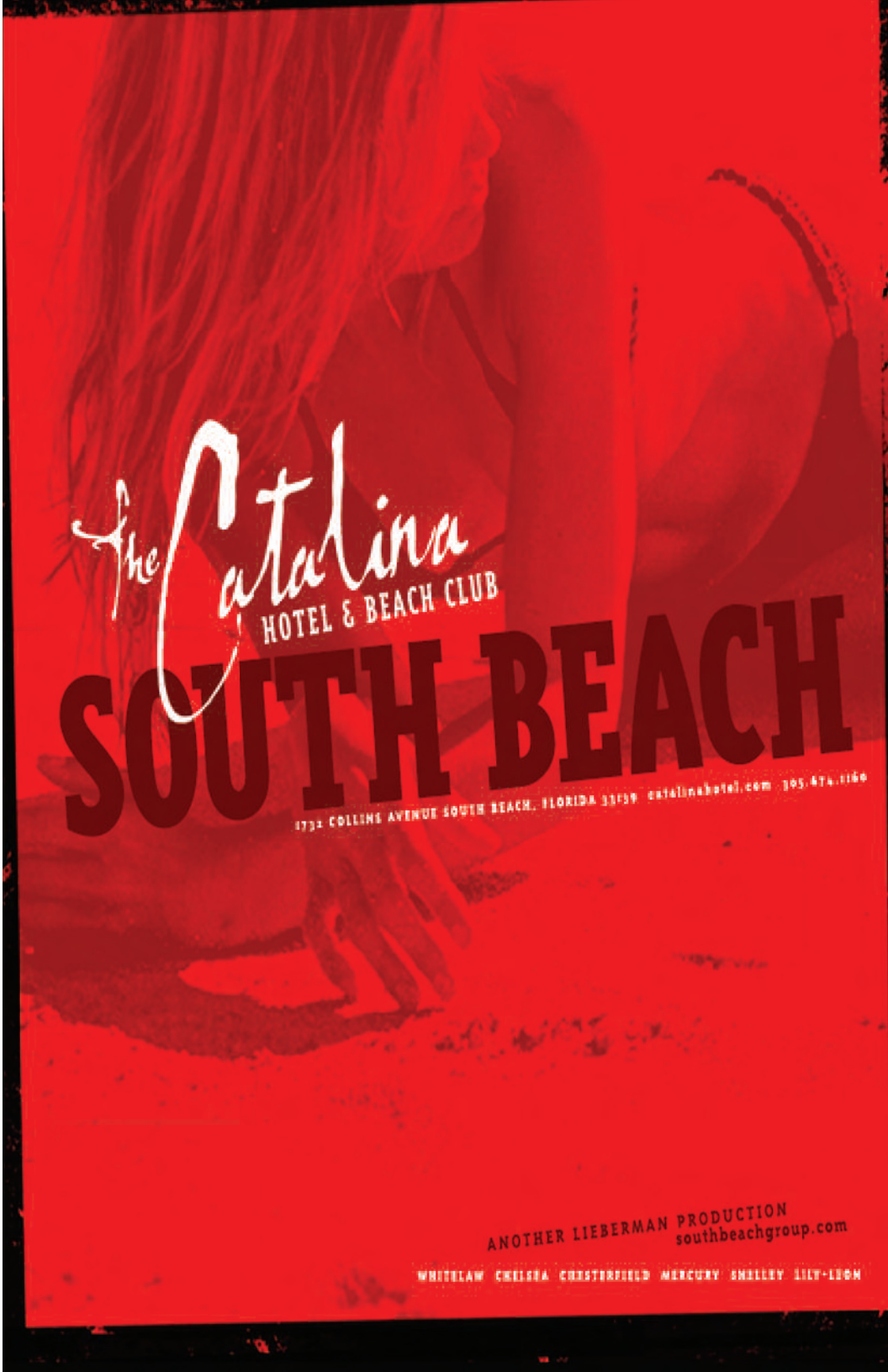
WAH 50
Ward Nasse Gallery 36
Mike Weiss Gallery 44
Michael Werner 50
Whitney Museum 50
Wildenstein & Co. Inc. 50
Woodward Gallery 36
Wyman Contemporary 44

Y

Yerba Buena Center 57

Z

Zabriskie Gallery 46
Andre Zarre Gallery 44
Zürcher Studio 36



The Catalina
HOTEL & BEACH CLUB
SOUTH BEACH
1732 COLLINS AVENUE SOUTH BEACH, FLORIDA 33139 catalinahotel.com 305.474.1160

ANOTHER LIEBERMAN PRODUCTION
southbeachgroup.com
WHITELAW CHEWISA CHRISTOPHERFIELD MERCURY SHALLEY LILY-LIDEM

THROCKMORTON FINE ART



TINA, Under the Mexican Sky

December 17th - March 6th, 2010

Book Available: TINA, UNDER THE MEXICAN SKY, \$45.00

Tina Modotti, Hands of a Washerwoman, platinum print, 1928, 7 3/4 x 9 3/4 in., vintage

145 East 57th Street, 3rd Floor
New York, NY 10022

tel 212. 223. 1059 fax 212. 223. 1937

www.throckmorton-nyc.com info@throckmorton-nyc.com